

p130 Cas (Phospho-Tyr410) Antibody

Catalog No: #11651



Package Size: #11651-1 50ul #11651-2 100ul

Orders: order@signalwayantibody.comSupport: tech@signalwayantibody.com

Description

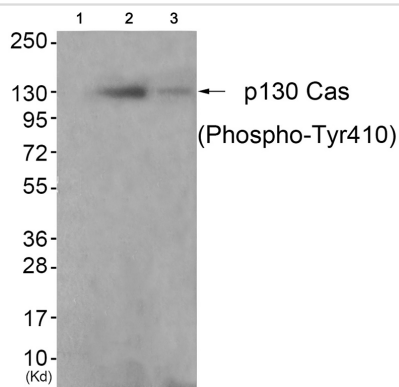
Product Name	p130 Cas (Phospho-Tyr410) Antibody
Host Species	Rabbit
Clonality	Polyclonal
Purification	Antibodies were produced by immunizing rabbits with synthetic phosphopeptide and KLH conjugates. Antibodies were purified by affinity-chromatography using epitope-specific phosphopeptide. Non-phospho specific antibodies were removed by chromatography using non-phosphopeptide.
Applications	WB IHC
Species Reactivity	Hu
Specificity	The antibody detects endogenous levels of p130 Cas only when phosphorylated at tyrosine 410.
Immunogen Type	Peptide-KLH
Immunogen Description	Peptide sequence around phosphorylation site of tyrosine 410(G-V-Y(p)-A-V) derived from Human p130 Cas .
Target Name	p130 Cas
Modification	Phospho
Other Names	BCAR1; CRKAS; CRK-ASSOCIATED SUBSTRATE;
Accession No.	Swiss-Prot#: P56945; NCBI Gene#: 9564; NCBI Protein#: NP_055382.2.
Uniprot	P56945
GeneID	9564;
SDS-PAGE MW	130kd
Concentration	1.0mg/ml
Formulation	Rabbit IgG in phosphate buffered saline (without Mg ²⁺ and Ca ²⁺), pH 7.4, 150mM NaCl, 0.02% sodium azide and 50% glycerol.
Storage	Store at -20°C/1 year

Application Details

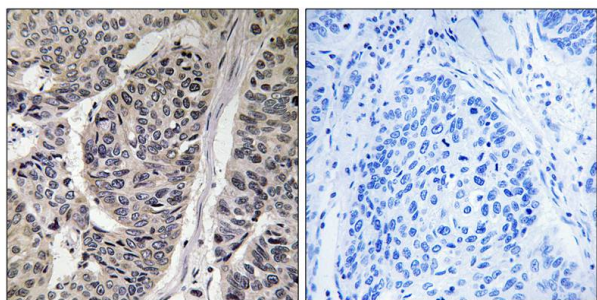
Western blotting: 1:500~1:1000

Immunohistochemistry: 1:50~1:100

Images



Western blot analysis of extracts from K562 cells (Lane 2) and 3T3 cells (Lane 3), using P130 Cas(Phospho-Tyr410) Antibody #11651. The lane on the left is treated with antigen-specific peptide.



Immunohistochemical analysis of paraffin-embedded human breast carcinoma tissue, using p130 Cas (Phospho-Tyr410) antibody #11651 (left) or the same antibody preincubated with blocking peptide (right).

Background

Docking protein which plays a central coordinating role for tyrosine kinase-based signaling related to cell adhesion. Implicated in induction of cell migration. Overexpression confers antiestrogen resistance on breast cancer cells.

Katarzyna Modzelewska, J. Biol. Chem., Dec 2006; 281: 37527 - 37535.

Kevin Ogden, Am J Physiol Heart Circ Physiol, Dec 2006; 291: H2857 - H2863.

Sangkil Nam, Cancer Res., Oct 2005; 65: 9185 - 9189.

Norikazu Yamana, Mol. Cell. Biol., Sep 2006; 26: 6844 - 6

Note: This product is for in vitro research use only