

Estrogen Receptor- α (Phospho-Tyr537) Antibody

Catalog No: #11657



Package Size: #11657-1 50ul #11657-2 100ul

Orders: order@signalwayantibody.comSupport: tech@signalwayantibody.com

Description

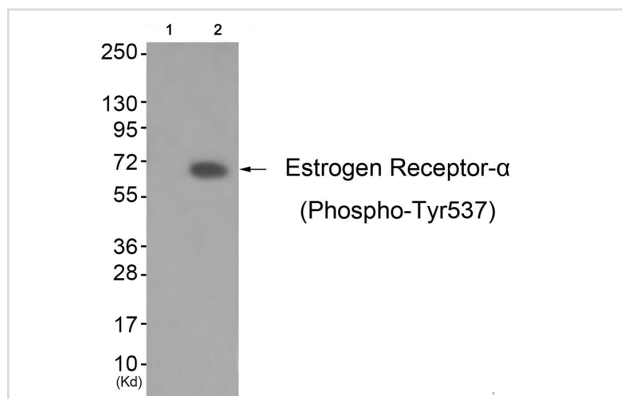
Product Name	Estrogen Receptor- α (Phospho-Tyr537) Antibody
Host Species	Rabbit
Clonality	Polyclonal
Purification	Antibodies were produced by immunizing rabbits with synthetic phosphopeptide and KLH conjugates. Antibodies were purified by affinity-chromatography using epitope-specific phosphopeptide. Non-phospho specific antibodies were removed by chromatography using non-phosphopeptide.
Applications	WB IHC
Species Reactivity	Hu Ms
Specificity	The antibody detects endogenous levels of ER- α only when phosphorylated at tyrosine 537.
Immunogen Type	Peptide-KLH
Immunogen Description	Peptide sequence around phosphorylation site of tyrosine 537(P-L-Y(p)-D-L) derived from Human Estrogen Receptor- α .
Target Name	Estrogen Receptor- α
Modification	Phospho
Other Names	ER; ESR; ESR1; ESTR; NR3A1
Accession No.	Swiss-Prot#: P03372; NCBI Gene#: 2099; NCBI Protein#: NP_000116.2.
Uniprot	P03372
GeneID	2099;
SDS-PAGE MW	66kd
Concentration	1.0mg/ml
Formulation	Rabbit IgG in phosphate buffered saline (without Mg ²⁺ and Ca ²⁺), pH 7.4, 150mM NaCl, 0.02% sodium azide and 50% glycerol.
Storage	Store at -20°C/1 year

Application Details

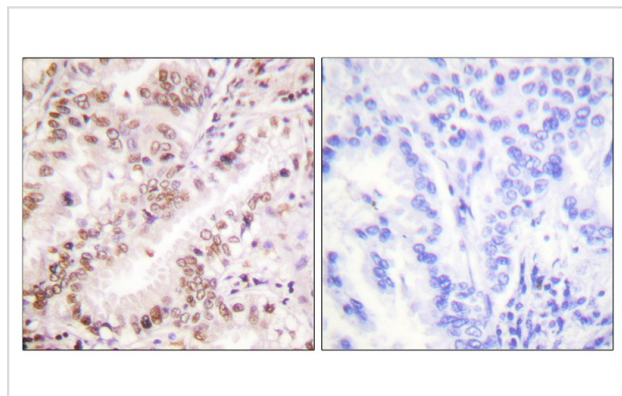
Western blotting: 1:500~1:1000

Immunohistochemistry: 1:50~1:100

Images



Western blot analysis of extracts from K562 cells (Lane 2), using Estrogen Receptor- α (Phospho-Tyr537) Antibody #11657. The lane on the left is treated with antigen-specific peptide.



Immunohistochemical analysis of paraffin-embedded human lung carcinoma tissue using Estrogen Receptor- α (Phospho-Tyr537) antibody #11657 (left) or the same antibody preincubated with blocking peptide (right).

Background

Nuclear hormone receptor. The steroid hormones and their receptors are involved in the regulation of eukaryotic gene expression and affect cellular proliferation and differentiation in target tissues.

Sehime Temel, *Endocrinology*, Oct 2002; 143: 3974.

Xin-Tian Zhang, *AACR Meeting Abstracts*, Apr 2005; 2005: 302.

Suwit J. Somponpun, *Am J Physiol Regulatory Integrative Comp Physiol*, Sep 2004; 287: R661 - R669.

Marcello Maggiolini, *Cancer Res.*, Oct 1999;

Note: This product is for in vitro research use only