

## JAK2 (Phospho-Tyr570) Antibody

Catalog No: #11663

Package Size: #11663-1 50ul #11663-2 100ul

Orders: [order@signalwayantibody.com](mailto:order@signalwayantibody.com)Support: [tech@signalwayantibody.com](mailto:tech@signalwayantibody.com)

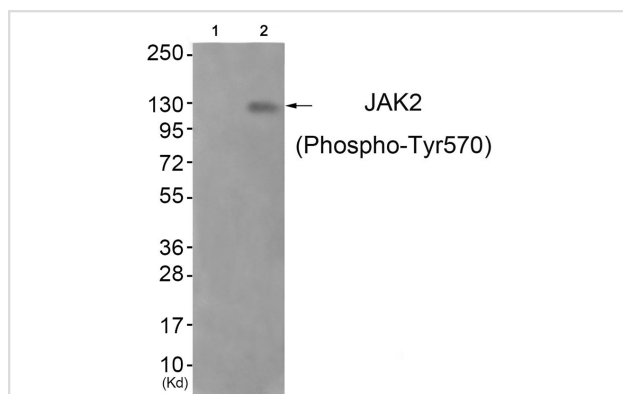
## Description

Product Name	JAK2 (Phospho-Tyr570) Antibody
Host Species	Rabbit
Clonality	Polyclonal
Purification	Antibodies were produced by immunizing rabbits with synthetic phosphopeptide and KLH conjugates. Antibodies were purified by affinity-chromatography using epitope-specific phosphopeptide. Non-phospho specific antibodies were removed by chromatography using non-phosphopeptide.
Applications	WB
Species Reactivity	Hu
Specificity	The antibody detects endogenous levels of JAK2 only when phosphorylated at tyrosine 750.
Immunogen Type	Peptide-KLH
Immunogen Description	Peptide sequence around phosphorylation site of tyrosine 570(G-D-Y(p)-G-Q) derived from Human JAK2 .
Target Name	JAK2
Modification	Phospho
Other Names	JAK2; Janus kinase 2; kinase Jak2;
Accession No.	Swiss-Prot#: O60674; NCBI Gene#: 3717; NCBI Protein#: NP_004963.1.
Uniprot	O60674
GeneID	3717;
SDS-PAGE MW	125kd
Concentration	1.0mg/ml
Formulation	Rabbit IgG in phosphate buffered saline (without Mg <sup>2+</sup> and Ca <sup>2+</sup> ), pH 7.4, 150mM NaCl, 0.02% sodium azide and 50% glycerol.
Storage	Store at -20°C/1 year

## Application Details

Western blotting: 1:500~1:1000

## Images



Western blot analysis of extracts from JK cells (Lane 2), using JAK2 (Phospho-Tyr570) Antibody #11663. The lane on the left is treated with antigen-specific peptide.

## Background

---

Plays a role in leptin signaling and control of body weight.

Saltzman A., Biochem. Biophys. Res. Commun. 246:627-633(1998).

Dalal I., Blood 91:844-851(1998).

Peeters P., Blood 90:2535-2540(1997).

---

Note: This product is for in vitro research use only