

B-RAF (Phospho-Thr599) Antibody

Catalog No: #11682

Package Size: #11682-1 50ul #11682-2 100ul

Orders: order@signalwayantibody.comSupport: tech@signalwayantibody.com

Description

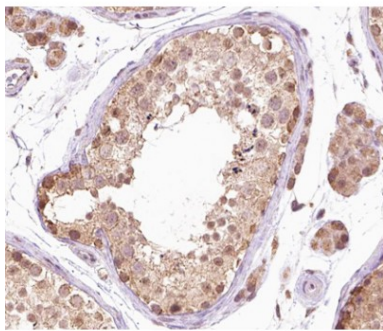
Product Name	B-RAF (Phospho-Thr599) Antibody
Host Species	Rabbit
Clonality	Polyclonal
Purification	Antibodies were produced by immunizing rabbits with synthetic phosphopeptide and KLH conjugates. Antibodies were purified by affinity-chromatography using epitope-specific phosphopeptide. Non-phospho specific antibodies were removed by chromatography using non-phosphopeptide.
Applications	WB IHC IF
Species Reactivity	Hu Ms Rt
Specificity	The antibody detects endogenous levels of B-Raf only when phosphorylated at threonine 598.
Immunogen Type	Peptide-KLH
Immunogen Description	Peptide sequence around phosphorylation site of threonine 599 (L-A-T(p)-V-K) derived from Human B-RAF.
Target Name	B-RAF
Modification	Phospho
Other Names	B-RAF; RAFB1; RMIL; BRAF1; c-RMIL
Accession No.	Swiss-Prot#: P15056; NCBI Gene#: 673; NCBI Protein#: NP_004324.2.
Uniprot	P15056
GeneID	673;
SDS-PAGE MW	84kd
Concentration	1.0mg/ml
Formulation	Rabbit IgG in phosphate buffered saline (without Mg ²⁺ and Ca ²⁺), pH 7.4, 150mM NaCl, 0.02% sodium azide and 50% glycerol.
Storage	Store at -20°C/1 year

Application Details

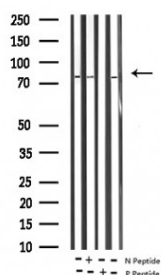
WB dilution: 1:500-1:1000

Immunohistochemistry: 1:50~1:100IF dilution: 1:100-1:200

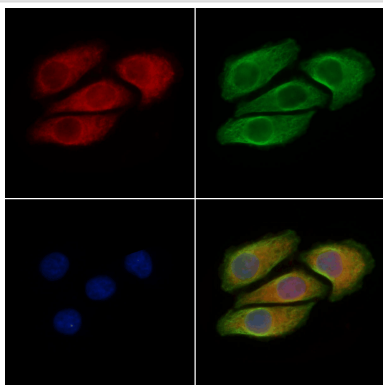
Images



Immunohistochemical analysis of paraffin-embedded human breast carcinoma tissue using B-Raf (Phospho-Thr598) antibody #11682 (left) or the same antibody preincubated with blocking peptide (right).



Western blot analysis of extracts from mouse brain/rat lung, using Phospho-B-RAF (Thr599) Antibody. -/+ means absence or presence of N peptide(non-phospho peptide) and P peptide(phospho peptide)



Immunofluorescence staining of methanol-fixed HeLa cells using B-RAF (Phospho-Thr599) Antibody #11682.

Background

Involved in the transduction of mitogenic signals from the cell membrane to the nucleus. May play a role in the postsynaptic responses of hippocampal neuron.

Armelle Calipel, J. Biol. Chem., Oct 2003; 278: 42409 - 42418.

Tara J. Dillon, J. Biol. Chem., Sep 2003; 278: 35940 - 35949.

R K Jaiswal, Mol. Cell. Biol., Oct 1994; 14: 6944 - 6953.

Laura L. Dugan, J. Biol. Chem., Sep 1999; 274: 25842.

Note: This product is for in vitro research use only