

Retinoblastoma (Phospho-Ser608) Antibody

Catalog No: #11720



Package Size: #11720-1 50ul #11720-2 100ul

Orders: order@signalwayantibody.comSupport: tech@signalwayantibody.com

Description

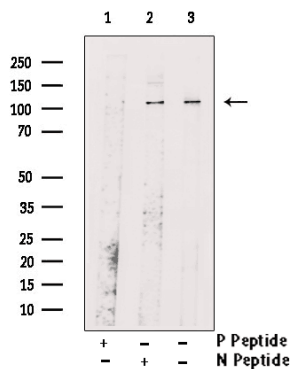
| | |
|-----------------------|-----------------------------------------------------------------------------------------------------------------------------------------------------------------------------------------------------------------------------------------------------------------------------------------|
| Product Name | Retinoblastoma (Phospho-Ser608) Antibody |
| Host Species | Rabbit |
| Clonality | Polyclonal |
| Purification | Antibodies were produced by immunizing rabbits with synthetic phosphopeptide and KLH conjugates. Antibodies were purified by affinity-chromatography using epitope-specific phosphopeptide. Non-phospho specific antibodies were removed by chromatography using non-phosphopeptide. |
| Applications | WB IHC IF |
| Species Reactivity | Hu Ms Rt |
| Specificity | The antibody detects endogenous levels of Retinoblastoma only when phosphorylated at serine 608. |
| Immunogen Type | Peptide-KLH |
| Immunogen Description | Peptide sequence around phosphorylation site of Serine 608(Y-L-S(p)-P-V) derived from Human Retinoblastoma. |
| Target Name | Retinoblastoma |
| Modification | Phospho |
| Other Names | P105-RB; PP105; PP110; RB1; |
| Accession No. | Swiss-Prot#: P06400; NCBI Gene#: 5925; NCBI Protein#: NP_000312.2. |
| Uniprot | P06400 |
| GeneID | 5925; |
| SDS-PAGE MW | 110kd |
| Concentration | 1.0mg/ml |
| Formulation | Rabbit IgG in phosphate buffered saline (without Mg2+ and Ca2+), pH 7.4, 150mM NaCl, 0.02% sodium azide and 50% glycerol. |
| Storage | Store at -20°C/1 year |

Application Details

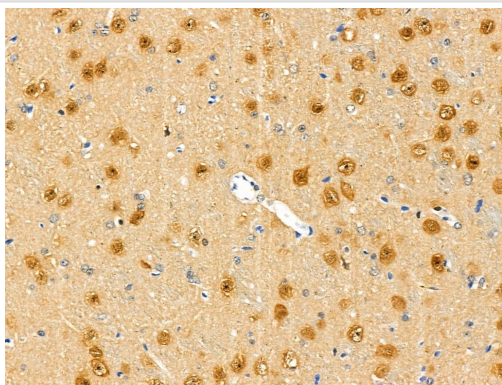
Western blotting: 1:500~1:1000

Immunohistochemistry: 1:50~1:100IF dilution: 1:100-1:200

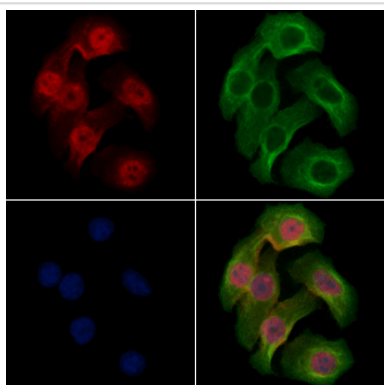
Images



Western blot analysis of extracts from MCF7 cells, using Phospho-Rb (Ser608) Antibody. Lane1 was treated with phospho-blocking peptide, Lane2 was treated with non-phospho-blocking peptide.



Immunohistochemical analysis of paraffin-embedded Mouse brain tissue using Retinoblastoma (Phospho-Ser608) antibody #11720.



Immunofluorescence staining of methanol-fixed HeLa cells using Retinoblastoma (Phospho-Ser608) Antibody #11720.

Background

Retinoblastoma (RB) is an embryonic malignant neoplasm of retinal origin. It almost always presents in early childhood and is often bilateral. Spontaneous regression ('cure') occurs in some cases.

Lee W.-H., Nature 329:642-645(1987).

Lee W.-H., Science 235:1394-1399(1987).

Friend S.H., Proc. Natl. Acad. Sci. U.S.A. 84:9059-9063(1987).

Note: This product is for in vitro research use only