

## STK39 (Phospho-Ser309) Antibody

Catalog No: #11755



Package Size: #11755-1 50ul #11755-2 100ul

Orders: [order@signalwayantibody.com](mailto:order@signalwayantibody.com)Support: [tech@signalwayantibody.com](mailto:tech@signalwayantibody.com)

## Description

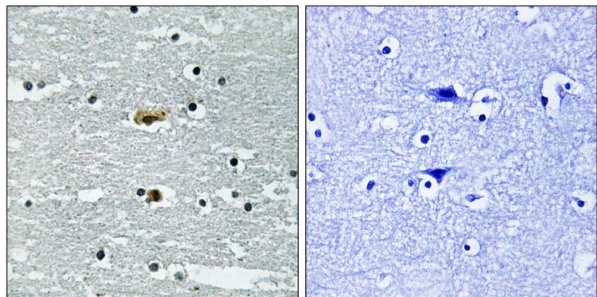
|                       |   |
|-----------------------|---|
| Product Name          | STK39 (Phospho-Ser309) Antibody   |
| Host Species          | Rabbit  |
| Clonality             | Polyclonal  |
| Purification          | Antibodies were produced by immunizing rabbits with synthetic phosphopeptide and KLH conjugates.<br>Antibodies were purified by affinity-chromatography using epitope-specific phosphopeptide. Non-phospho specific antibodies were removed by chromatography using non-phosphopeptide. |
| Applications          | WB IHC  |
| Species Reactivity    | Hu  |
| Specificity           | The antibody detects endogenous levels of STK39 only when phosphorylated at serine 309.   |
| Immunogen Type        | Peptide-KLH   |
| Immunogen Description | Peptide sequence around phosphorylation site of Serine 309(K-G-S(p)-F-R) derived from Human STK39.  |
| Target Name           | STK39   |
| Modification          | Phospho   |
| Other Names           | DCHT; STK39; SPAK;  |
| Accession No.         | Swiss-Prot#: Q9UEW8; NCBI Gene#: 27347; NCBI Protein#: NP_037365.2.   |
| Uniprot               | Q9UEW8  |
| GeneID                | 27347;  |
| SDS-PAGE MW           | 60kd  |
| Concentration         | 1.0mg/ml  |
| Formulation           | Rabbit IgG in phosphate buffered saline (without Mg <sup>2+</sup> and Ca <sup>2+</sup> ), pH 7.4, 150mM NaCl, 0.02% sodium azide and 50% glycerol.  |
| Storage               | Store at -20°C/1 year   |

## Application Details

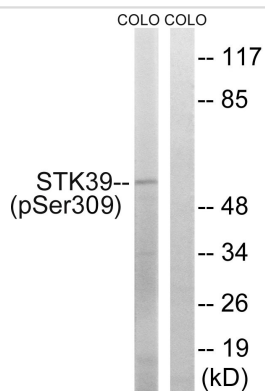
Western blotting: 1:500~1:1000

Immunohistochemistry: 1:50~1:100

## Images



Immunohistochemical analysis of paraffin-embedded human brain tissue using STK39 (Phospho-Ser309) antibody #11755 (left) or the same antibody preincubated with blocking peptide (right).



Western blot analysis of extracts from COLO cells using STK39 (Phospho-Ser309) Antibody #11755. The lane on the right is treated with the antigen-specific peptide.

## Background

May act as a mediator of stress-activated signals.

Johnston A.M., *Oncogene* 19:4290-4297(2000).

Melnick M.B., Submitted (OCT-1997) to the EMBL/GenBank/DDBJ databases.

Olsen J.V., *Cell* 127-635-648(2006).

Note: This product is for in vitro research use only