

## Ephrin B1/B2/B3 (phospho Y324/Y311/Y318) Antibody

Catalog No: #11780



Package Size: #11780-1 50ul #11780-2 100ul

Orders: [order@signalwayantibody.com](mailto:order@signalwayantibody.com)Support: [tech@signalwayantibody.com](mailto:tech@signalwayantibody.com)

## Description

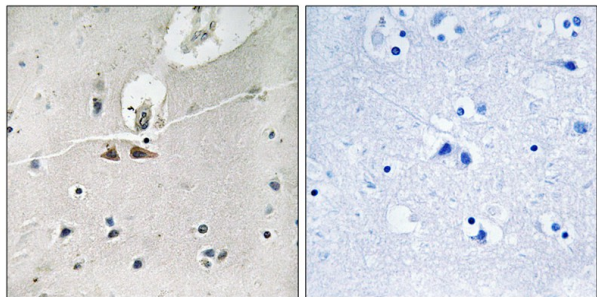
Product Name	Ephrin B1/B2/B3 (phospho Y324/Y311/Y318) Antibody
Host Species	Rabbit
Clonality	Polyclonal
Purification	Antibodies were produced by immunizing rabbits with synthetic phosphopeptide and KLH conjugates. Antibodies were purified by affinity-chromatography using epitope-specific phosphopeptide. Non-phospho specific antibodies were removed by chromatography using non-phosphopeptide.
Applications	WB IHC
Species Reactivity	Hu
Specificity	The antibody detects endogenous levels of Ephrin B1/B2/B3 only when phosphorylated at tyrosine 324/311/318.
Immunogen Type	Peptide-KLH
Immunogen Description	Peptide sequence around phosphorylation site of tyrosine 324/311/318 (G-D-Y(p)-G-H) derived from Human Ephrin B1/B2/B3 .
Target Name	Ephrin B1/B2/B3
Modification	Phospho
Other Names	EPL2; CEL5-L; EFL-3; EFNB1; ELK-L
Accession No.	Swiss-Prot#: P98172/P52799/Q15768; NCBI Gene#: 1947/1948/1949; NCBI Protein#: NP_004420.1.
Uniprot	P98172
GeneID	1947;
SDS-PAGE MW	46kd
Concentration	1.0mg/ml
Formulation	Rabbit IgG in phosphate buffered saline (without Mg <sup>2+</sup> and Ca <sup>2+</sup> ), pH 7.4, 150mM NaCl, 0.02% sodium azide and 50% glycerol.
Storage	Store at -20°C/1 year

## Application Details

Western blotting: 1:500~1:1000

Immunohistochemistry: 1:50~1:100

## Images



Immunohistochemical analysis of paraffin-embedded human brain tissue using Ephrin B1/B2/B3 (Phospho-Tyr324) antibody #11780 (left) or the same antibody preincubated with blocking peptide (right).

## Background

This gene encodes a member of the ephrin family. The encoded protein is a type I membrane protein and a ligand of Eph-related receptor tyrosine kinases. It may play a role in cell adhesion and function in the development or maintenance of the nervous system.

Beckmann M.P., EMBO J. 13:3757-3762(1994).

Davis S., Science 266:816-819(1994).

Fletcher F.A., Submitted (JAN-1997) to the EMBL/GenBank/DDBJ databases.

Note: This product is for in vitro research use only