

## Gab2 (Phospho-Tyr643) Antibody

Catalog No: #11802

Package Size: #11802-1 50ul #11802-2 100ul

Orders: [order@signalwayantibody.com](mailto:order@signalwayantibody.com)Support: [tech@signalwayantibody.com](mailto:tech@signalwayantibody.com)

## Description

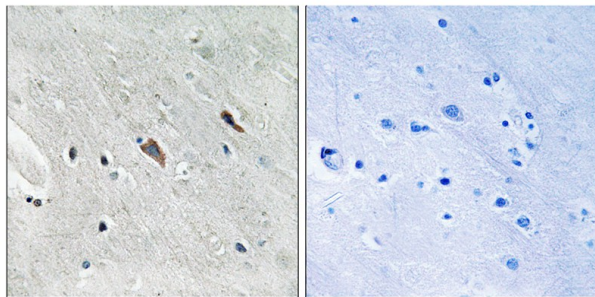
|                       |   |
|-----------------------|---|
| Product Name          | Gab2 (Phospho-Tyr643) Antibody  |
| Host Species          | Rabbit  |
| Clonality             | Polyclonal  |
| Purification          | Antibodies were produced by immunizing rabbits with synthetic phosphopeptide and KLH conjugates.<br>Antibodies were purified by affinity-chromatography using epitope-specific phosphopeptide. Non-phospho specific antibodies were removed by chromatography using non-phosphopeptide. |
| Applications          | WB IHC  |
| Species Reactivity    | Hu Ms Rt  |
| Specificity           | The antibody detects endogenous levels of Gab2 only when phosphorylated at tyrosine 643.  |
| Immunogen Type        | Peptide-KLH   |
| Immunogen Description | Peptide sequence around phosphorylation site of tyrosine 643(V-D-Y(p)-V-Q) derived from Human Gab2 .  |
| Target Name           | Gab2  |
| Modification          | Phospho   |
| Other Names           | pp100; GABJ; KIAA0571;  |
| Accession No.         | Swiss-Prot#: Q9UQC2; NCBI Gene#: 9846; NCBI Protein#: NP_536739.1.  |
| Uniprot               | Q9UQC2  |
| GeneID                | 9846;   |
| SDS-PAGE MW           | 74kd  |
| Concentration         | 1.0mg/ml  |
| Formulation           | Rabbit IgG in phosphate buffered saline (without Mg <sup>2+</sup> and Ca <sup>2+</sup> ), pH 7.4, 150mM NaCl, 0.02% sodium azide and 50% glycerol.  |
| Storage               | Store at -20°C/1 year   |

## Application Details

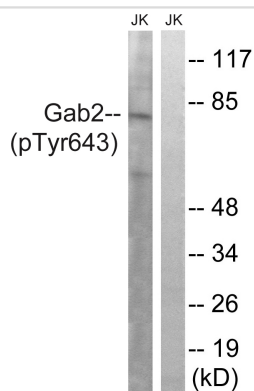
Western blotting: 1:500~1:1000

Immunohistochemistry: 1:50~1:100

## Images



Immunohistochemical analysis of paraffin-embedded human brain tissue using Gab2 (Phospho-Tyr643) antibody #11802 (left) or the same antibody preincubated with blocking peptide (right).



Western blot analysis of extracts from JK cells (Lane 1), using Gab2 (Phospho-Tyr643) Antibody #11802. The lane on the right is treated with antigen-specific peptide.

## Background

This gene is a member of the GRB2-associated binding protein (GAB) gene family and is similar to the GAB1 gene. These proteins contain pleckstrin homology (PH) domain, and bind SHP2 tyrosine phosphatase and GRB2 adapter protein. They act as adapters for transmitting various signals in response to stimuli through cytokine and growth factor receptors, and T- and B-cell antigen receptors. The protein encoded by this gene is the principal activator of phosphatidylinositol-3 kinase in response to activation of the high affinity IgE receptor. Two alternatively spliced transcripts encoding different isoforms have been described for this gene.

Nishida K., Blood 93:1809-1816(1999).

Nagase T., DNA Res. 5:31-39(1998).

Salomon A.R., Proc. Natl. Acad. Sci. U.S.A. 100:443-448(2003).

Note: This product is for in vitro research use only