

PHB(Phospho-Thr258) Antibody

Catalog No: #11588

Package Size: #11588-1 50ul #11588-2 100ul

Orders: order@signalwayantibody.com

Support: tech@signalwayantibody.com

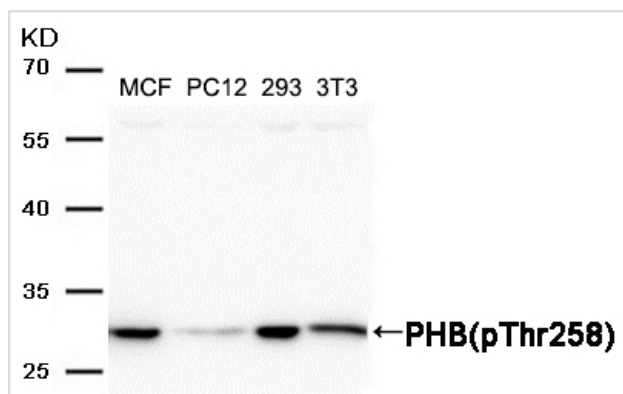
Description

Product Name	PHB(Phospho-Thr258) Antibody
Host Species	Rabbit
Clonality	Polyclonal
Purification	Antibodies were produced by immunizing rabbits with synthetic phosphopeptide and KLH conjugates. Antibodies were purified by affinity-chromatography using epitope-specific phosphopeptide. Non-phospho specific antibodies were removed by chromatography using non-phosphopeptide.
Applications	WB
Species Reactivity	Hu Ms Rt
Specificity	The antibody detects endogenous level of PHB only when phosphorylated at threonine 258.
Immunogen Type	Peptide-KLH
Immunogen Description	Peptide sequence around phosphorylation site of threonine 258 (N-I-T(p)-Y-L) derived from Human PHB.
Target Name	PHB
Modification	Phospho
Other Names	Prohibitin; PHB1
Accession No.	Swiss-Prot: P35232; NCBI Gene ID: 5245; NCBI Protein: NP_001268425.1.
Uniprot	P35232
GeneID	5245;
SDS-PAGE MW	29
Concentration	1.0mg/ml
Formulation	Supplied at 1.0mg/mL in phosphate buffered saline (without Mg ²⁺ and Ca ²⁺), pH 7.4, 150mM NaCl, 0.02% sodium azide and 50% glycerol.
Storage	Store at -20°C

Application Details

Western blotting: 1:500~1:1000

Images



Western blot analysis of extracts from MCF, PC12, 293 and 3T3 cells using PHB (Phospho-Thr258) Antibody #11588.

Background

Prohibitin inhibits DNA synthesis. It has a role in regulating proliferation. As yet it is unclear if the protein or the mRNA exhibits this effect. May play a role in regulating mitochondrial respiration activity and in aging.

Note: This product is for in vitro research use only