

## IGF1 Antibody

Catalog No: #32070

Package Size: #32070-1 50ul #32070-2 100ul

Orders: [order@signalwayantibody.com](mailto:order@signalwayantibody.com)Support: [tech@signalwayantibody.com](mailto:tech@signalwayantibody.com)

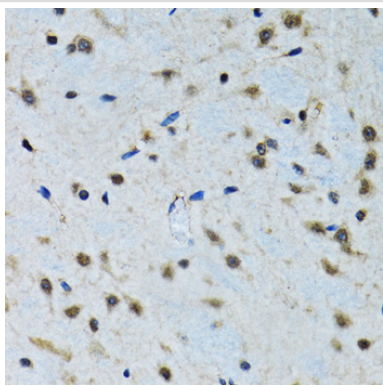
## Description

Product Name	IGF1 Antibody
Host Species	Rabbit
Clonality	Polyclonal
Purification	Antibodies were purified by affinity purification using immunogen.
Applications	WB,IHC
Species Reactivity	Human,Mouse,Rat
Specificity	The antibody detects endogenous level of total IGF1 protein.
Immunogen Type	Peptide
Immunogen Description	A synthetic peptide of human IGF1.
Target Name	IGF1
Other Names	IGF1; IGF1A; IGF1;
Accession No.	Swiss-Prot:P05019NCBI Gene ID:3479
Uniprot	P05019
GeneID	3479;
SDS-PAGE MW	17KD
Concentration	1.0mg/ml
Formulation	Supplied at 1.0mg/mL in phosphate buffered saline (without Mg <sup>2+</sup> and Ca <sup>2+</sup> ), pH 7.4, 150mM NaCl, 0.02% sodium azide and 50% glycerol.
Storage	Store at -20°C

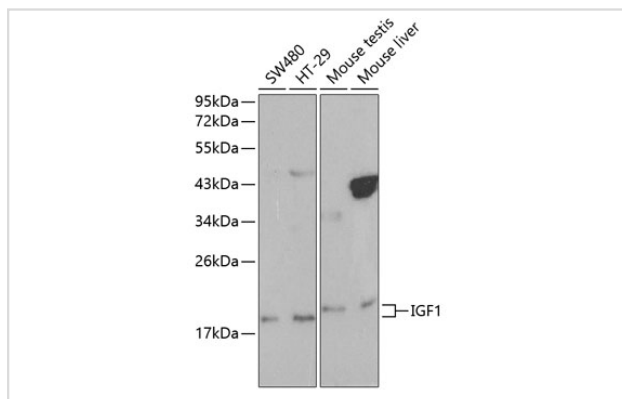
## Application Details

WB 1:500 - 1:2000IHC 1:50 - 1:200

## Images



Immunohistochemistry of paraffin-embedded rat brain using IGF1 at dilution of 1:100 (40x lens).



Western blot analysis of extracts of various cell lines, using IGF1 at 1:1000 dilution.

## Background

IGF1, also named as IBP1, MGF, IGF-IA and Somatomedin-C, belongs to the insulin family. IGF1 is structurally and functionally related to insulin but have a much higher growth-promoting activity. Altered expression or mutation of IGF1 is associated with several human disorders, including type I diabetes and various forms of cancer. Defects in IGF1 are the cause of insulin-like growth factor I deficiency (IGF1 deficiency) which is an autosomal recessive disorder characterized by growth retardation, sensorineural deafness and mental retardation. The antibody is specific to isoform IGF1A.

Note: This product is for in vitro research use only