

SERPINA1 Antibody

Catalog No: #32119

Package Size: #32119-1 50ul #32119-2 100ul

Orders: order@signalwayantibody.comSupport: tech@signalwayantibody.com

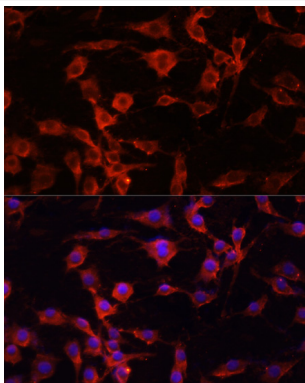
Description

Product Name	SERPINA1 Antibody
Host Species	Rabbit
Clonality	Polyclonal
Purification	Antibodies were purified by affinity purification using immunogen.
Applications	WB,IHC,IF
Species Reactivity	Human,Mouse,Rat
Specificity	The antibody detects endogenous level of total SERPINA1 protein.
Immunogen Type	Recombinant Protein
Immunogen Description	Recombinant protein of human SERPINA1.
Target Name	SERPINA1
Other Names	SERPINA1; A1A; A1AT; AAT; MGC23330
Accession No.	Swiss-Prot:P01009NCBI Gene ID:5265
Uniprot	P01009
GeneID	5265;
SDS-PAGE MW	47KD
Concentration	1.0mg/ml
Formulation	Supplied at 1.0mg/mL in phosphate buffered saline (without Mg ²⁺ and Ca ²⁺), pH 7.4, 150mM NaCl, 0.02% sodium azide and 50% glycerol.
Storage	Store at -20°C

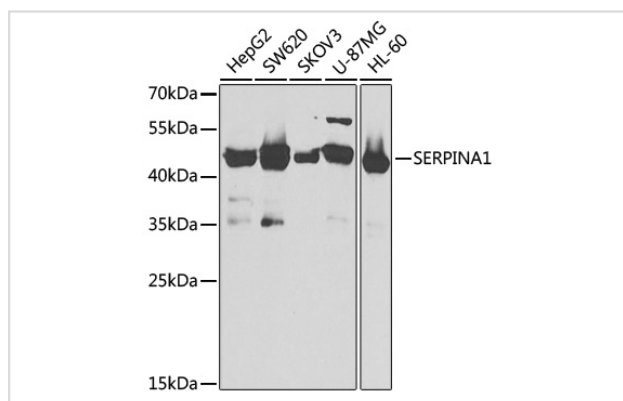
Application Details

WB□1:500 - 1:2000IHC□1:50 - 1:200IF□1:50 - 1:200

Images



Immunofluorescence analysis of PC-12 cells using SERPINA1 at dilution of 1:100 (40x lens). Blue: DAPI for nuclear staining.



Western blot analysis of extracts of various cell lines, using SERPINA1 at 1:1000 dilution.

Background

The protein encoded by this gene is secreted and is a serine protease inhibitor whose targets include elastase, plasmin, thrombin, trypsin, chymotrypsin, and plasminogen activator. Defects in this gene can cause emphysema or liver disease. Several transcript variants encoding the same protein have been found for this gene.

Note: This product is for in vitro research use only