

YWHAE Antibody

Catalog No: #32135



Package Size: #32135-1 50ul #32135-2 100ul

Orders: order@signalwayantibody.com
Support: tech@signalwayantibody.com

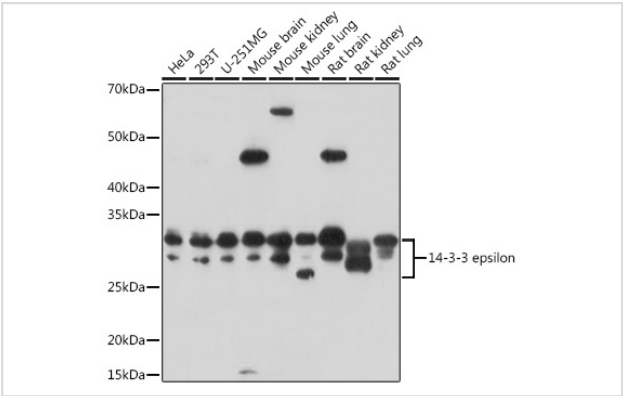
Description

Product Name	YWHAE Antibody
Host Species	Rabbit
Clonality	Polyclonal
Isotype	IgG
Purification	Affinity purification
Applications	WB,IF
Species Reactivity	Human,Mouse,Rat
Specificity	The antibody detects endogenous level of total YWHAE protein.
Immunogen Type	Recombinant Protein
Immunogen Description	Recombinant fusion protein of human 14-3-3 epsilon (NP_006752.1).
Target Name	YWHAE
Other Names	YWHAE;14-3-3E;HEL2;KCIP-1;MDCR;MDS
Accession No.	Uniprot:P62258GeneID:7531
Uniprot	P62258
GeneID	7531
SDS-PAGE MW	29-32Kda
Concentration	1.0mg/ml
Formulation	PBS with 0.02% sodium azide,50% glycerol,pH7.3.
Storage	Store at -20°C. Avoid freeze / thaw cycles.

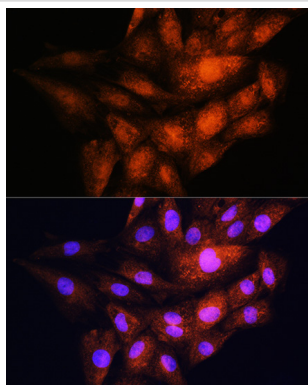
Application Details

WB 1:500 - 1:2000IF 1:50 - 1:200

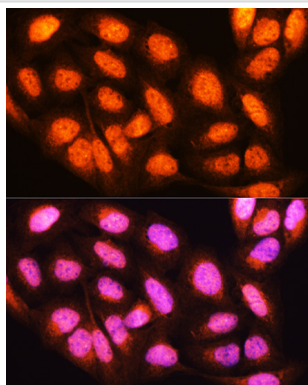
Images



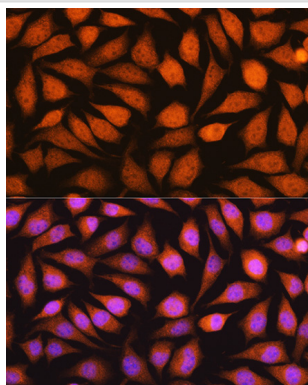
Western blot analysis of extracts of various cell lines, using 14-3-3 epsilon antibody.



Immunofluorescence analysis of H9C2 cells using 14-3-3 epsilon antibody.



Immunofluorescence analysis of U2OS cells using 14-3-3 epsilon antibody.



Immunofluorescence analysis of L929 cells using 14-3-3 epsilon antibody.

Background

This gene product belongs to the 14-3-3 family of proteins which mediate signal transduction by binding to phosphoserine-containing proteins. This highly conserved protein family is found in both plants and mammals, and this protein is 100% identical to the mouse ortholog. It interacts with CDC25 phosphatases, RAF1 and IRS1 proteins, suggesting its role in diverse biochemical activities related to signal transduction, such as cell division and regulation of insulin sensitivity. It has also been implicated in the pathogenesis of small cell lung cancer. Two transcript variants, one protein-coding and the other non-protein-coding, have been found for this gene.

Note: This product is for in vitro research use only