

ARPC1A Antibody

Catalog No: #32144



Package Size: #32144-1 50ul #32144-2 100ul

Orders: order@signalwayantibody.com
Support: tech@signalwayantibody.com

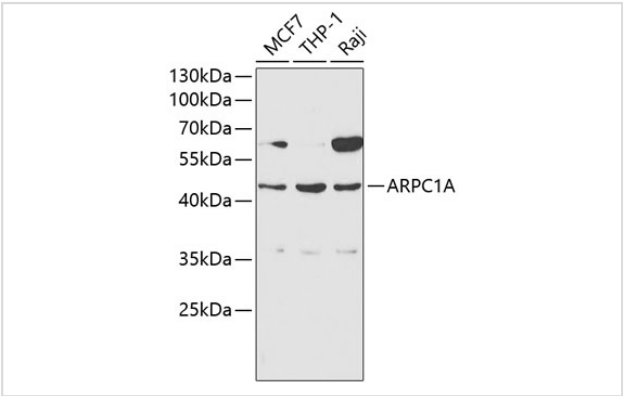
Description

Product Name	ARPC1A Antibody
Host Species	Rabbit
Clonality	Polyclonal
Isotype	IgG
Purification	Affinity purification
Applications	WB
Species Reactivity	Human
Specificity	The antibody detects endogenous level of total ARPC1A protein.
Immunogen Type	Recombinant Protein
Immunogen Description	Recombinant fusion protein of human ARPC1A (NP_006400.2).
Target Name	ARPC1A
Other Names	ARPC1A;Arc40;HEL-68;HEL-S-307;SOP2Hs;SOP2L
Accession No.	Uniprot:Q92747GeneID:10552
Uniprot	Q92747
GeneID	10552
SDS-PAGE MW	43kDa
Concentration	1.0mg/ml
Formulation	PBS with 0.02% sodium azide,50% glycerol,pH7.3.
Storage	Store at -20°C. Avoid freeze / thaw cycles.

Application Details

WB 1:500 - 1:2000

Images



Western blot analysis of extracts of various cell lines, using ARPC1A antibody.

Background

This gene encodes one of seven subunits of the human Arp2/3 protein complex. This subunit is a member of the SOP2 family of proteins and is most similar to the protein encoded by gene ARPC1B. The similarity between these two proteins suggests that they both may function as p41 subunit of the human Arp2/3 complex that has been implicated in the control of actin polymerization in cells. It is possible that the p41 subunit is involved in assembling and maintaining the structure of the Arp2/3 complex. Multiple versions of the p41 subunit may adapt the functions of the complex to different cell types or developmental stages. Alternatively spliced transcript variants encoding different isoforms have been found for this gene.

Note: This product is for in vitro research use only