

## CUL3 Antibody

Catalog No: #32149

Package Size: #32149-1 50ul #32149-2 100ul

Orders: [order@signalwayantibody.com](mailto:order@signalwayantibody.com)Support: [tech@signalwayantibody.com](mailto:tech@signalwayantibody.com)

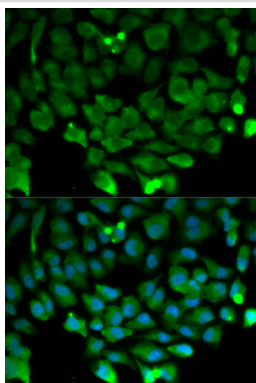
## Description

Product Name	CUL3 Antibody
Host Species	Rabbit
Clonality	Polyclonal
Isotype	IgG
Purification	Affinity purification
Applications	WB,IF
Species Reactivity	Human,Mouse,Rat
Specificity	The antibody detects endogenous level of total CUL3 protein.
Immunogen Type	Recombinant Protein
Immunogen Description	Recombinant fusion protein of human Cullin 3 (NP_003581.1).
Target Name	CUL3
Other Names	CUL-3;PHA2E;CUL3;Cullin 3;cullin-3
Accession No.	Uniprot:Q13618GeneID:8452
Uniprot	Q13618
GeneID	8452
SDS-PAGE MW	84KDa
Concentration	1.0mg/ml
Formulation	PBS with 0.02% sodium azide,50% glycerol,pH7.3.
Storage	Store at -20°C. Avoid freeze / thaw cycles.

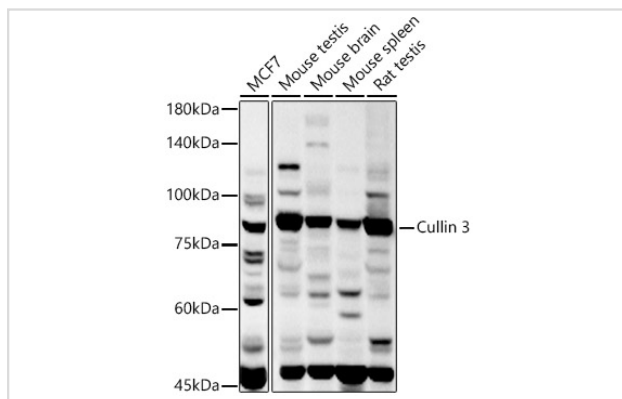
## Application Details

WB□1:500 - 1:2000IF□1:50 - 1:200

## Images



Immunofluorescence analysis of HeLa cells using Cullin 3 antibody.



Western blot analysis of extracts of various cell lines, using Cullin 3 antibody.

## Background

This gene encodes a member of the cullin protein family. The encoded protein plays a critical role in the polyubiquitination and subsequent degradation of specific protein substrates as the core component and scaffold protein of an E3 ubiquitin ligase complex. Complexes including the encoded protein may also play a role in late endosome maturation. Mutations in this gene are a cause of type 2E pseudohypoaldosteronism. Alternatively spliced transcript variants encoding multiple isoforms have been observed for this gene.

Note: This product is for in vitro research use only