

MAGED1 Antibody

Catalog No: #32153

Package Size: #32153-1 50ul #32153-2 100ul

Orders: order@signalwayantibody.comSupport: tech@signalwayantibody.com

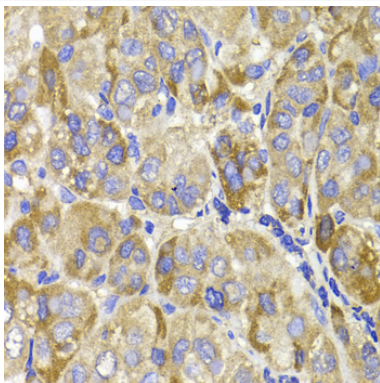
Description

Product Name	MAGED1 Antibody
Host Species	Rabbit
Clonality	Polyclonal
Purification	Antibodies were purified by affinity purification using immunogen.
Applications	WB,IHC
Species Reactivity	Human,Mouse,Rat
Specificity	The antibody detects endogenous level of total MAGED1 protein.
Immunogen Type	Recombinant Protein
Immunogen Description	Recombinant protein of human MAGED1.
Target Name	MAGED1
Other Names	MAGED1; DLXIN-1; NRAGE;
Accession No.	Swiss-Prot:Q9Y5V3NCBI Gene ID:9500
Uniprot	Q9Y5V3
GeneID	9500;
SDS-PAGE MW	86KD
Concentration	1.0mg/ml
Formulation	Supplied at 1.0mg/mL in phosphate buffered saline (without Mg ²⁺ and Ca ²⁺), pH 7.4, 150mM NaCl, 0.02% sodium azide and 50% glycerol.
Storage	Store at -20°C

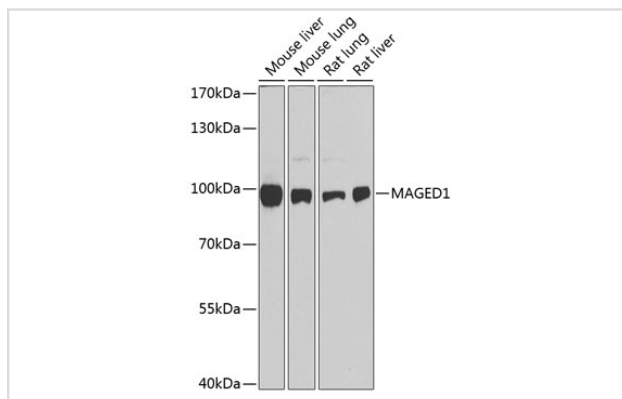
Application Details

WB □ 1:500 - 1:2000 IHC □ 1:50 - 1:200

Images



Immunohistochemistry of paraffin-embedded human liver cancer using MAGED1 at dilution of 1:100 (40x lens).



Western blot analysis of extracts of various cell lines, using MAGED1 at 1:1000 dilution.

Background

MAGE-D1, also known as NRAGE or Dlxin-1, is a member of the MAGE family of proteins. Identified as a p75 neurotrophin receptor intracellular binding protein, MAGE-D1 induces developmental apoptosis of motoneurons, and is required for p75NTR-dependent apoptosis in sympathetic neurons. It is suggested that MAGE-D1 can suppress the motility and adhesion response of tumor cells. By forming a heterocomplex with Dlx/Msx family homeodomain proteins and Necdin, MAGE-D1 modulates the function of Dlx/Msx homeodomain during terminal differentiation and maturation of neurons. MAGE-D1 is also involved in the phosphorylation of IKK-alpha/beta, and subsequent transcriptional activation of the p65 subunit of NF-kappaB, via the XIAP-Tak1-Tab1 complex. (20100315, 19639218, 17453828, 15272023) G.

Note: This product is for in vitro research use only