

## eNOS(Ab-495) Antibody

Catalog No: #21235

Package Size: #21235-1 50ul #21235-2 100ul

Orders: [order@signalwayantibody.com](mailto:order@signalwayantibody.com)Support: [tech@signalwayantibody.com](mailto:tech@signalwayantibody.com)

## Description

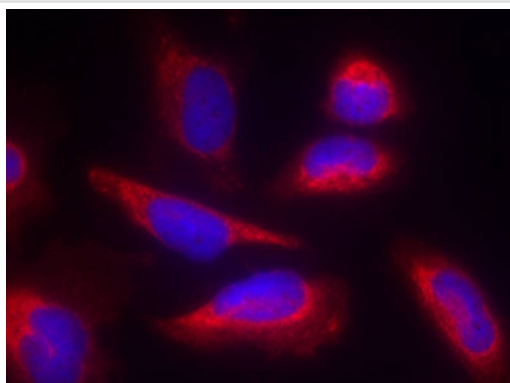
Product Name	eNOS(Ab-495) Antibody
Host Species	Rabbit
Clonality	Polyclonal
Purification	Antibodies were produced by immunizing rabbits with synthetic peptide and KLH conjugates. Antibodies were purified by affinity-chromatography using epitope-specific peptide.
Applications	IF
Species Reactivity	Hu Ms Rt
Specificity	The antibody detects endogenous level of total eNOS protein.
Immunogen Type	Peptide-KLH
Immunogen Description	Peptide sequence around aa.493~497 (K-K-T-F-K) derived from Human eNOS.
Target Name	eNOS
Other Names	Constitutive NOS; EC-NOS; ECNOS; NOS3; NOSIII
Accession No.	Swiss-Prot: P29474NCBI Protein: NP_000594.2
Uniprot	P29474
GeneID	4846;
Concentration	1.0mg/ml
Formulation	Supplied at 1.0mg/mL in phosphate buffered saline (without Mg <sup>2+</sup> and Ca <sup>2+</sup> ), pH 7.4, 150mM NaCl, 0.02% sodium azide and 50% glycerol.
Storage	Store at -20°C for long term preservation (recommended). Store at 4°C for short term use.

## Application Details

Predicted MW: 140kd

Immunofluorescence: 1:100~1:200

## Images



Immunofluorescence staining of methanol-fixed HeLa cells using eNOS(Ab-495) Antibody #21235.

## Background

---

Produces nitric oxide (NO) which is implicated in vascular smooth muscle relaxation through a cGMP-mediated signal transduction pathway. NO mediates vascular endothelial growth factor (VEGF)-induced angiogenesis in coronary vessels and promotes blood clotting through the activation of platelets.

Moreno H Jr.(2008)Breast Cancer Res Treat. 109(1):181-2.

Lorenz M,et al.(2007)FASEB J. May;21(7):1556-64.

Lin HI,et al.(2006)Transplant Proc. Sep;38(7):2203-6.

---

Note: This product is for in vitro research use only