

SH2D1A Antibody

Catalog No: #32179



Package Size: #32179-1 50ul #32179-2 100ul

Orders: order@signalwayantibody.com
Support: tech@signalwayantibody.com

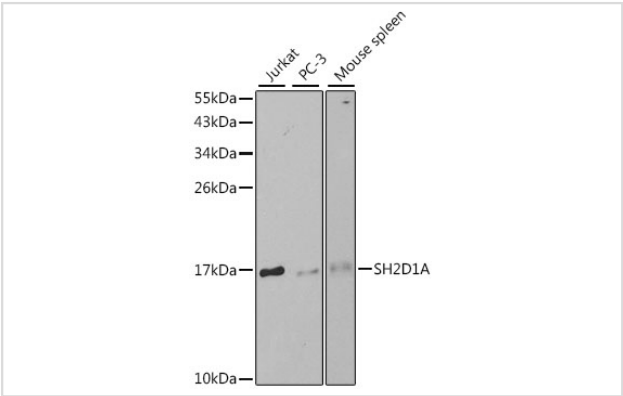
Description

Product Name	SH2D1A Antibody
Host Species	Rabbit
Clonality	Polyclonal
Purification	Antibodies were purified by affinity purification using immunogen.
Applications	WB,IF
Species Reactivity	Human,Mouse
Specificity	The antibody detects endogenous level of total SH2D1A protein.
Immunogen Type	Recombinant Protein
Immunogen Description	Recombinant protein of human SH2D1A .
Target Name	SH2D1A
Other Names	SH2D1A; DSHP; EBVS; FLJ18687; FLJ92177
Accession No.	Swiss-Prot:O60880NCBI Gene ID:4068
Uniprot	O60880
GeneID	4068;
SDS-PAGE MW	14KD
Concentration	1.0mg/ml
Formulation	Supplied at 1.0mg/mL in phosphate buffered saline (without Mg2+ and Ca2+), pH 7.4, 150mM NaCl, 0.02% sodium azide and 50% glycerol.
Storage	Store at -20°C

Application Details

WB 1:500 - 1:2000IF 1:50 - 1:200

Images



Western blot analysis of extracts of various cell lines, using SH2D1A at 1:1000 dilution.

Background

SH2D1A and SH2D1B are small, adaptor proteins with a single SH2-domain that play important signal transduction roles mediated by the signaling lymphocytic activation molecule (SLAM) family receptors (1). SH2D1A (also called SAP or SLAM-associated protein) is frequently mutated in patients with X-linked lymphoproliferative disease (DuncanB'B—s disease), which is characterized by extreme susceptibility to Epstein-Barr virus; approximately 50 different SH2D1A mutations have been reported to date (2-4). The single SH2D1B gene in humans (also called EAT-2 or Ewing's sarcoma's/FLI1-activated transcript 2) is present as a pair of duplicated EAT-2A and EAT-2B genes with identical genomic organization in mouse and rat (5,6).

Note: This product is for in vitro research use only