

NOD1 Antibody

Catalog No: #32256



Package Size: #32256-1 50ul #32256-2 100ul

Orders: order@signalwayantibody.com
Support: tech@signalwayantibody.com

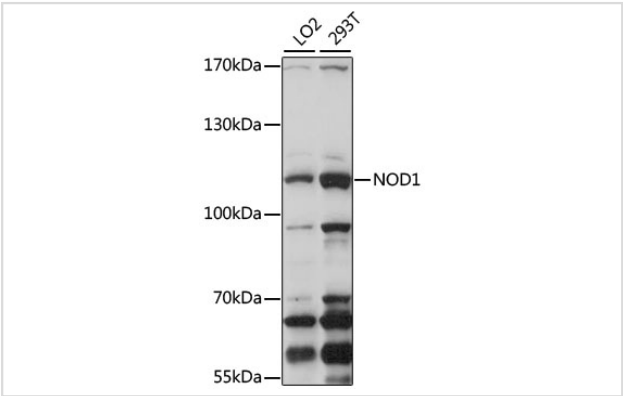
Description

Product Name	NOD1 Antibody
Host Species	Rabbit
Clonality	Polyclonal
Purification	Antibodies were purified by affinity purification using immunogen.
Applications	WB,IHC
Species Reactivity	Human,Mouse,Rat
Specificity	The antibody detects endogenous level of total NOD1 protein.
Immunogen Type	Recombinant Protein
Immunogen Description	Recombinant protein of human NOD1.
Target Name	NOD1
Other Names	NOD1; CARD4; CLR7.1; NLRC1;
Accession No.	Swiss-Prot:Q9Y239NCBI Gene ID:10392
Uniprot	Q9Y239
GeneID	10392;
SDS-PAGE MW	108KD
Concentration	1.0mg/ml
Formulation	Supplied at 1.0mg/mL in phosphate buffered saline (without Mg2+ and Ca2+), pH 7.4, 150mM NaCl, 0.02% sodium azide and 50% glycerol.
Storage	Store at -20°C

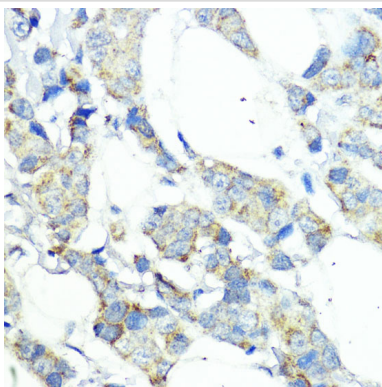
Application Details

WB 1:500 - 1:2000IHC 1:50 - 1:200

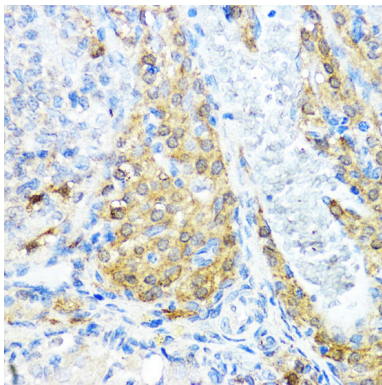
Images



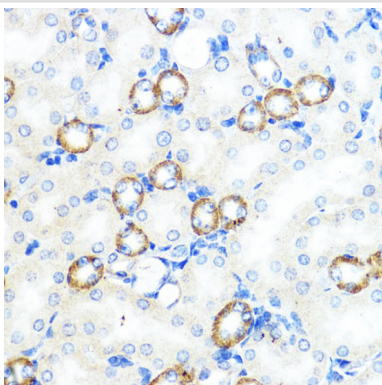
Western blot analysis of extracts of various cell lines, using NOD1 at 1:1000 dilution.



Immunohistochemistry of paraffin-embedded human mammary cancer using NOD1 at dilution of 1:100 (40x lens).



Immunohistochemistry of paraffin-embedded rat ovary using NOD1 at dilution of 1:100 (40x lens).



Immunohistochemistry of paraffin-embedded mouse kidney using NOD1 at dilution of 1:100 (40x lens).

Background

Nod1/CARD4 is a cytosolic protein structurally related to Apaf-1 and plant drug-resistance proteins that has been implicated in apoptosis and inflammatory responses to certain pathogenic bacteria (1-3). It contains an amino-terminal caspase recruitment domain (CARD) that is linked to a central nucleotide-binding domain (NBD; also known as a NOD domain) and is followed by carboxy-terminal leucine-rich repeats (LRR) (1). Like Apaf-1, Nod1 induces apoptosis by a CARD/NBD-dependent activation of caspase-9 (1). The primary function of Nod1 is thought to be as a sensor for certain pathogenic microbes and triggering inflammatory responses including the activation of NF- κ B and JNK pathways (4-6). The LRR of Nod1 appears to be involved in recognition of microbial components and the CARD domain induces NF- κ B activation in cooperation with the CARD containing kinase, RICK/RIP2/CARDIAK (1,5,6). Mutations in Nod1 have been linked increased susceptibility to asthma (7) and inflammatory bowel disease (8).

Note: This product is for in vitro research use only