

IGF2BP1 Antibody

Catalog No: #32294

Package Size: #32294-1 50ul #32294-2 100ul

Orders: order@signalwayantibody.comSupport: tech@signalwayantibody.com

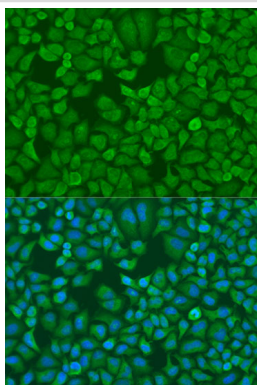
Description

Product Name	IGF2BP1 Antibody
Host Species	Rabbit
Clonality	Polyclonal
Purification	Antibodies were purified by affinity purification using immunogen.
Applications	WB,IHC,IF
Species Reactivity	Human,Mouse,Rat
Specificity	The antibody detects endogenous level of total IGF2BP1 protein.
Immunogen Type	Peptide
Immunogen Description	A synthetic peptide of human IGF2BP1.
Target Name	IGF2BP1
Other Names	IMP-1; CRDBP; ZBP1; CRD-BP; VICKZ1
Accession No.	Swiss-Prot:Q9NZI8NCBI Gene ID:10642
Uniprot	Q9NZI8
GeneID	10642;
SDS-PAGE MW	63KD
Concentration	1.0mg/ml
Formulation	Supplied at 1.0mg/mL in phosphate buffered saline (without Mg ²⁺ and Ca ²⁺), pH 7.4, 150mM NaCl, 0.02% sodium azide and 50% glycerol.
Storage	Store at -20°C

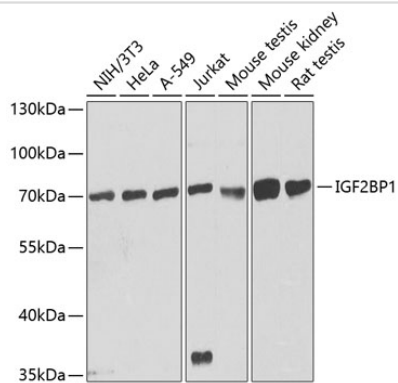
Application Details

WB□1:500 - 1:2000IHC□1:50 - 1:100IF□1:50 - 1:200

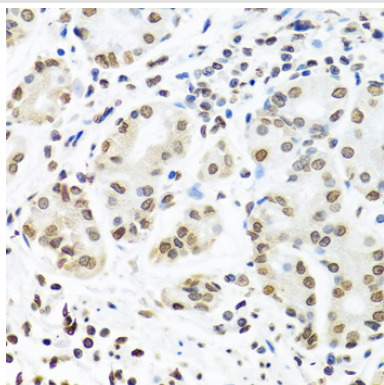
Images



Immunofluorescence analysis of U2OS cells using IGF2BP1 at dilution of 1:100. Blue: DAPI for nuclear staining.



Western blot analysis of extracts of various cell lines, using IGF2BP1 at 1:1000 dilution.



Immunohistochemistry of paraffin-embedded human stomach using IGF2BP1 at dilution of 1:100 (40x lens).

Background

Insulin-like growth factor-II mRNA-binding proteins (IMPs) belong to a family of zipcode-binding proteins (1,2). Three members of this family, IMP1, IMP2, and IMP3, have been identified (1,2). They contain two RNA recognition motifs, four K homology domains, and were found to function in mRNA localization, turnover, and translation control (1,2). Research studies have implicated these proteins in a variety of physiological and pathological processes, such as growth and development (3), testicular neoplasia (4), and melanocytic neoplasia (5).

Note: This product is for in vitro research use only