

REN Antibody

Catalog No: #32327

Package Size: #32327-1 50ul #32327-2 100ul

Orders: order@signalwayantibody.com

Support: tech@signalwayantibody.com

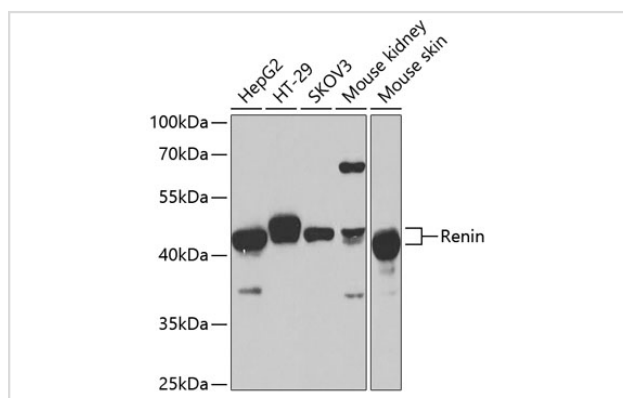
Description

Product Name	REN Antibody
Host Species	Rabbit
Clonality	Polyclonal
Purification	Antibodies were purified by affinity purification using immunogen.
Applications	WB,IHC
Species Reactivity	Human,Mouse,Rat
Specificity	The antibody detects endogenous level of total REN protein.
Immunogen Type	Recombinant Protein
Immunogen Description	Recombinant protein of human REN.
Target Name	REN
Other Names	FLJ10761;
Accession No.	Swiss-Prot:P00797NCBI Gene ID:5972
Uniprot	P00797
GeneID	5972;
SDS-PAGE MW	45KD
Concentration	1.0mg/ml
Formulation	Supplied at 1.0mg/mL in phosphate buffered saline (without Mg ²⁺ and Ca ²⁺), pH 7.4, 150mM NaCl, 0.02% sodium azide and 50% glycerol.
Storage	Store at -20°C

Application Details

WB □ 1:500 - 1:2000 IHC □ 1:100 - 1:200

Images



Western blot analysis of extracts of various cell lines, using Renin at 1:1000 dilution.

Background

Renin is a secreted proteinase whose enzymatic activity is to convert angiotensinogen into angiotensin I in the plasma, initiating a process that results in an elevation of blood pressure and increased sodium retention by the kidney (1). Renin is synthesized in kidney as a precursor, prorenin, which is released into circulation. Both renin and prorenin can bind to (pro)renin receptor and induce angiotensin-independent signaling events leading to activation of MAPKs and up-regulation of TGF- β 1 and matrix proteins (2, 3). Defects in renin can cause renal tubular dysgenesis, a severe autosomal recessive disorder of renal tubular development (4, 5).

Note: This product is for in vitro research use only