

## CHRM1 Antibody

Catalog No: #32333

Package Size: #32333-1 50ul #32333-2 100ul

Orders: [order@signalwayantibody.com](mailto:order@signalwayantibody.com)Support: [tech@signalwayantibody.com](mailto:tech@signalwayantibody.com)

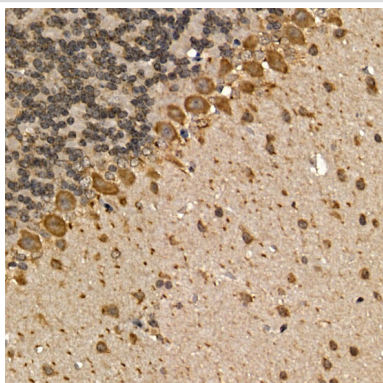
## Description

Product Name	CHRM1 Antibody
Host Species	Rabbit
Clonality	Polyclonal
Isotype	IgG
Purification	Affinity purification
Applications	WB,IHC,IF
Species Reactivity	Human,Mouse,Rat
Specificity	The antibody detects endogenous level of total CHRM1 protein.
Immunogen Type	Recombinant Protein
Immunogen Description	A synthetic peptide of human CHRM1 (NP_000729.2).
Target Name	CHRM1
Other Names	CHRM1;HM1;M1;M1R
Accession No.	Uniprot:P11229GeneID:1128
Uniprot	P11229
GeneID	1128
SDS-PAGE MW	51KDa
Concentration	1.0mg/ml
Formulation	PBS with 0.02% sodium azide,50% glycerol,pH7.3.
Storage	Store at -20°C. Avoid freeze / thaw cycles.

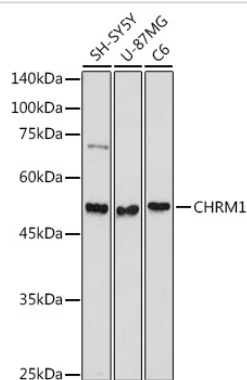
## Application Details

WB□1:500 - 1:2000IHC□1:500 - 1:2000IF□1:50 - 1:200

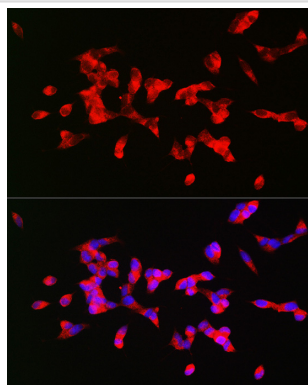
## Images



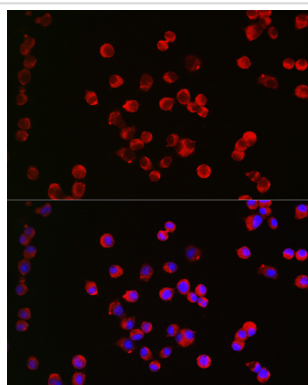
Immunohistochemistry of paraffin-embedded mouse brain using CHRM1 Rabbit pAb.



Western blot analysis of extracts of various cell lines, using CHRM1 antibody.



Immunofluorescence analysis of SH-SY5Y cells using CHRM1 Rabbit pAb.



Immunofluorescence analysis of Neuro-2a cells using CHRM1 Rabbit pAb.

## Background

The muscarinic cholinergic receptors belong to a larger family of G protein-coupled receptors. The functional diversity of these receptors is defined by the binding of acetylcholine and includes cellular responses such as adenylate cyclase inhibition, phosphoinositide degeneration, and potassium channel mediation. Muscarinic receptors influence many effects of acetylcholine in the central and peripheral nervous system. The muscarinic cholinergic receptor 1 is involved in mediation of vagally-induced bronchoconstriction and in the acid secretion of the gastrointestinal tract. The gene encoding this receptor is localized to 11q13.

Note: This product is for in vitro research use only