

# SERPINF1 Antibody

Catalog No: #32379



Package Size: #32379-1 50ul #32379-2 100ul

Orders: [order@signalwayantibody.com](mailto:order@signalwayantibody.com)  
Support: [tech@signalwayantibody.com](mailto:tech@signalwayantibody.com)

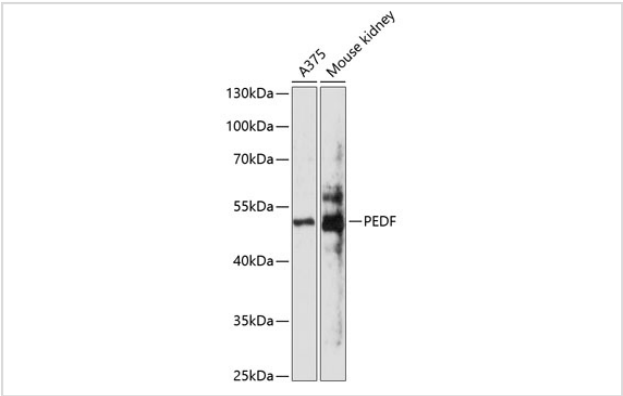
## Description

Product Name	SERPINF1 Antibody
Host Species	Rabbit
Clonality	Polyclonal
Purification	Antibodies were purified by affinity purification using immunogen.
Applications	WB
Species Reactivity	Human,Mouse
Specificity	The antibody detects endogenous level of total SERPINF1 protein.
Immunogen Type	Recombinant Protein
Immunogen Description	Recombinant protein of human SERPINF1.
Target Name	SERPINF1
Other Names	OI6; OI12; PEDF; EPC-1; PIG35
Accession No.	Swiss-Prot:P36955NCBI Gene ID:5176
Uniprot	P36955
GeneID	5176;
SDS-PAGE MW	46KD
Concentration	1.0mg/ml
Formulation	Supplied at 1.0mg/mL in phosphate buffered saline (without Mg2+ and Ca2+), pH 7.4, 150mM NaCl, 0.02% sodium azide and 50% glycerol.
Storage	Store at -20°C

## Application Details

WB 1:500 - 1:2000

## Images



Western blot analysis of extracts of various cell lines, using PEDF at 1:3000 dilution.

## Background

Pigment epithelium-derived growth factor (PEDF), also known as EPC-1 (early population doubling level cDNA-1), is a glycoprotein found naturally in the normal eye. PEDF has reported neuroprotective and differentiation properties and is secreted in abundance by retinal pigment epithelium cells. It belongs to the serine protease inhibitor (Serpín) superfamily and has been reported to inhibit angiogenesis and proliferation of several cell types. The B<sup>+</sup>poolingB<sup>+</sup> of PEDF within the interphotoreceptor matrix places this molecule in a prime physical location to affect the underlying neural retina. Additionally, PEDF induces neuronal differentiation and promotes survival of neurons of the central nervous system from degeneration caused by serum withdrawal or glutamate cytotoxicity.

Note: This product is for in vitro research use only