

PAX3 Antibody

Catalog No: #32380

Package Size: #32380-1 50ul #32380-2 100ul

Orders: order@signalwayantibody.comSupport: tech@signalwayantibody.com

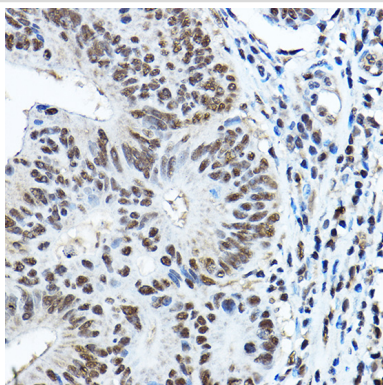
Description

Product Name	PAX3 Antibody
Host Species	Rabbit
Clonality	Polyclonal
Isotype	IgG
Purification	Affinity purification
Applications	WB,IHC,IF
Species Reactivity	Human,Mouse,Rat
Specificity	The antibody detects endogenous level of total PAX3 protein.
Immunogen Type	Recombinant Protein
Immunogen Description	Recombinant fusion protein of human PAX3 (NP_039230.1).
Target Name	PAX3
Other Names	PAX3;CDHS;HUP2;WS1;WS3
Accession No.	Uniprot:P23760GeneID:5077
Uniprot	P23760
GeneID	5077
SDS-PAGE MW	60KDa
Concentration	1.0mg/ml
Formulation	PBS with 0.02% sodium azide,50% glycerol,pH7.3.
Storage	Store at -20°C. Avoid freeze / thaw cycles.

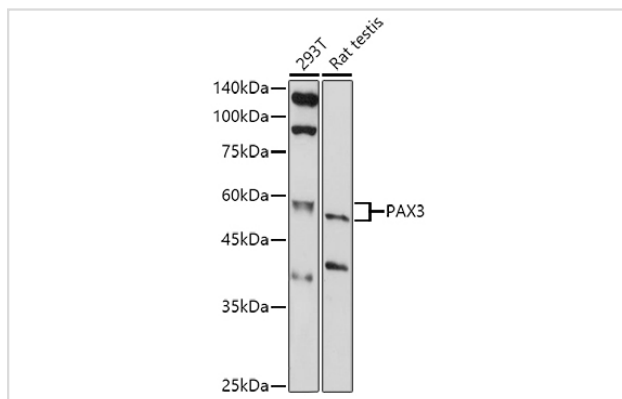
Application Details

WB□1:500 - 1:2000IHC□1:50 - 1:200IF□1:50 - 1:200

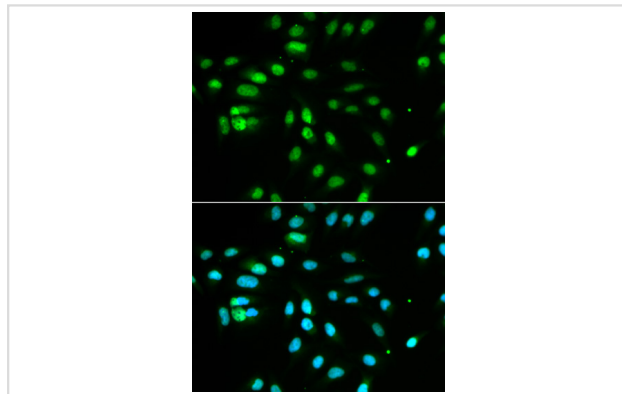
Images



Immunohistochemistry of paraffin-embedded human colon carcinoma using PAX3 Rabbit pAb.



Western blot analysis of extracts of various cell lines, using PAX3 antibody.



Immunofluorescence analysis of MCF-7 cells using PAX3 antibody.

Background

This gene is a member of the paired box (PAX) family of transcription factors. Members of the PAX family typically contain a paired box domain and a paired-type homeodomain. These genes play critical roles during fetal development. Mutations in paired box gene 3 are associated with Waardenburg syndrome, craniofacial-deafness-hand syndrome, and alveolar rhabdomyosarcoma. The translocation t(2;13)(q35;q14), which represents a fusion between PAX3 and the forkhead gene, is a frequent finding in alveolar rhabdomyosarcoma. Alternative splicing results in transcripts encoding isoforms with different C-termini.

Note: This product is for in vitro research use only