

POLB Antibody

Catalog No: #32383

Package Size: #32383-1 50ul #32383-2 100ul

Orders: order@signalwayantibody.com

Support: tech@signalwayantibody.com

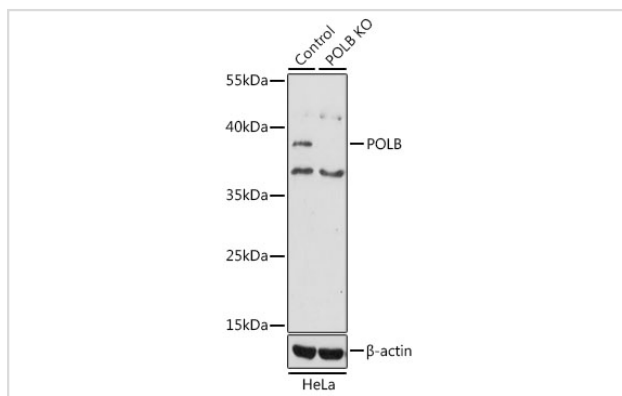
Description

Product Name	POLB Antibody
Host Species	Rabbit
Clonality	Polyclonal
Purification	Antibodies were purified by affinity purification using immunogen.
Applications	WB,IHC,IF
Species Reactivity	Human,Mouse
Specificity	The antibody detects endogenous level of total POLB protein.
Immunogen Type	Recombinant Protein
Immunogen Description	Recombinant protein of human POLB.
Target Name	POLB
Other Names	MGC125976; POLB;
Accession No.	Swiss-Prot:P06746NCBI Gene ID:5423
Uniprot	P06746
GeneID	5423;
SDS-PAGE MW	38KD
Concentration	1.0mg/ml
Formulation	Supplied at 1.0mg/mL in phosphate buffered saline (without Mg ²⁺ and Ca ²⁺), pH 7.4, 150mM NaCl, 0.02% sodium azide and 50% glycerol.
Storage	Store at -20°C

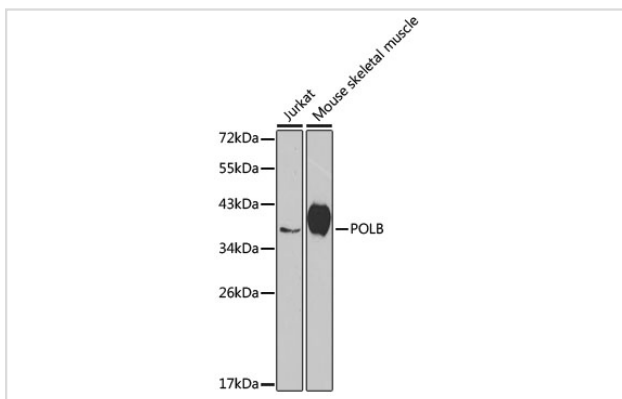
Application Details

WB 1:200 - 1:1000 IHC 1:50 - 1:200 IF 1:20 - 1:200

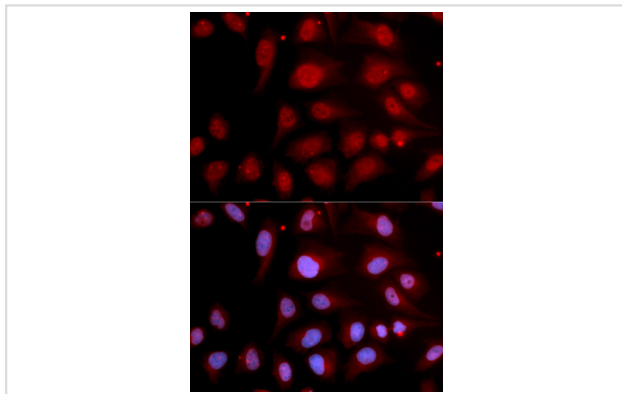
Images



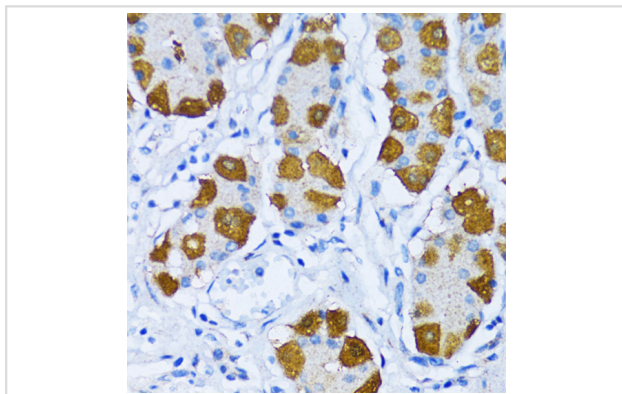
Western blot analysis of extracts from normal (control) and POLB knockout (KO) HeLa cells, using POLB at 1:1000 dilution.



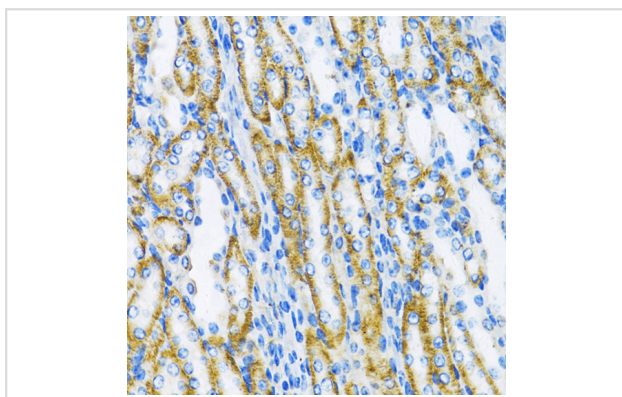
Western blot analysis of extracts of various cell lines, using POLB at 1:1000 dilution.



Immunofluorescence analysis of U2OS cells using POLB . Blue: DAPI for nuclear staining.



Immunohistochemistry of paraffin-embedded Human stomach using POLB at dilution of 1:100 (40x lens).



Immunohistochemistry of paraffin-embedded Mouse kidney using POLB at dilution of 1:100 (40x lens).

Background

The protein encoded by this gene is a DNA polymerase involved in base excision and repair, also called gap-filling DNA synthesis. The encoded protein, acting as a monomer, is normally found in the cytoplasm, but it translocates to the nucleus upon DNA damage. Several transcript variants of this gene exist, but the full-length nature of only one has been described to date.

Note: This product is for in vitro research use only