

## KPNA1 Antibody

Catalog No: #32410

Package Size: #32410-1 50ul #32410-2 100ul

Orders: [order@signalwayantibody.com](mailto:order@signalwayantibody.com)Support: [tech@signalwayantibody.com](mailto:tech@signalwayantibody.com)

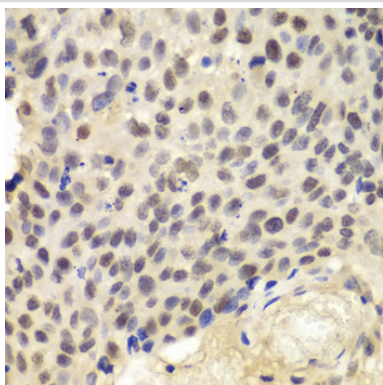
## Description

Product Name	KPNA1 Antibody
Host Species	Rabbit
Clonality	Polyclonal
Isotype	IgG
Purification	Affinity purification
Applications	WB,IHC
Species Reactivity	Human,Mouse,Rat
Specificity	The antibody detects endogenous level of total KPNA1 protein.
Immunogen Type	Recombinant Protein
Immunogen Description	Recombinant fusion protein of human KPNA1 (NP_002255.3).
Target Name	KPNA1
Other Names	KPNA1;IPOA5;NPI-1;RCH2;SRP1
Accession No.	Uniprot:P52294GeneID:3836
Uniprot	P52294
GeneID	3836
SDS-PAGE MW	60kDa/70kDa
Concentration	1.0mg/ml
Formulation	PBS with 0.02% sodium azide,50% glycerol,pH7.3.
Storage	Store at -20°C. Avoid freeze / thaw cycles.

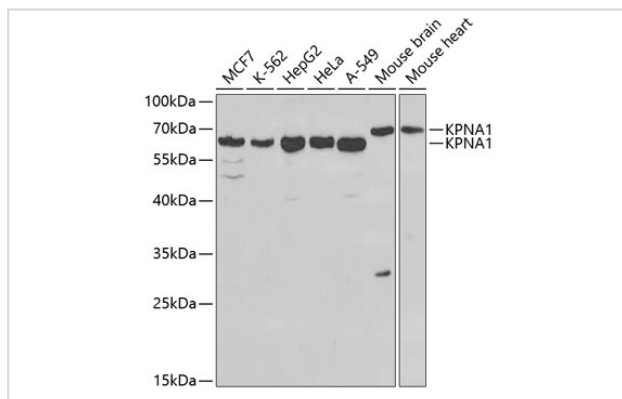
## Application Details

WB□1:500 - 1:2000IHC□1:50 - 1:200

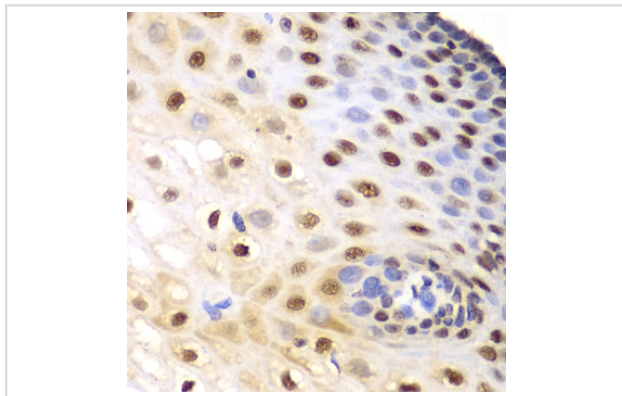
## Images



Immunohistochemistry of paraffin-embedded human lung cancer using KPNA1 antibody.



Western blot analysis of extracts of various cell lines, using KPNA1 antibody.



Immunohistochemistry of paraffin-embedded human esophagus using KPNA1 antibody.

## Background

The transport of molecules between the nucleus and the cytoplasm in eukaryotic cells is mediated by the nuclear pore complex (NPC), which consists of 60-100 proteins. Small molecules (up to 70 kD) can pass through the nuclear pore by nonselective diffusion while larger molecules are transported by an active process. The protein encoded by this gene belongs to the importin alpha family, and is involved in nuclear protein import. This protein interacts with the recombination activating gene 1 (RAG1) protein and is a putative substrate of the RAG1 ubiquitin ligase. Alternative splicing results in multiple transcript variants.

Note: This product is for in vitro research use only