

# FCER1A Antibody

Catalog No: #32415



Package Size: #32415-1 50ul #32415-2 100ul

Orders: [order@signalwayantibody.com](mailto:order@signalwayantibody.com)  
Support: [tech@signalwayantibody.com](mailto:tech@signalwayantibody.com)

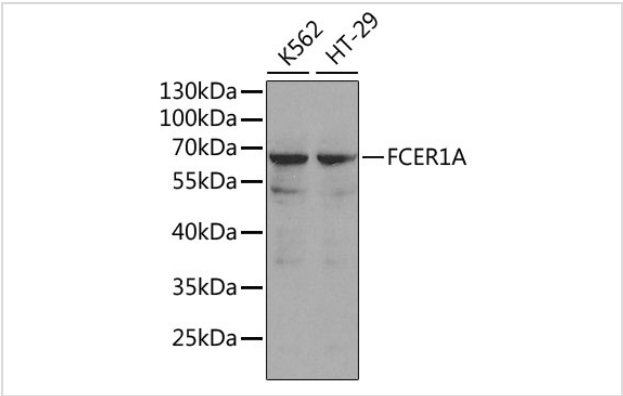
## Description

Product Name	FCER1A Antibody
Host Species	Rabbit
Clonality	Polyclonal
Purification	Antibodies were purified by affinity purification using immunogen.
Applications	WB
Species Reactivity	Human
Specificity	The antibody detects endogenous level of total FCER1A protein.
Immunogen Type	Recombinant Protein
Immunogen Description	Recombinant protein of human FCER1A.
Target Name	FCER1A
Other Names	FCE1A; FcERI;
Accession No.	Swiss-Prot:P12319NCBI Gene ID:2205
Uniprot	P12319
GeneID	2205;
SDS-PAGE MW	30KD
Concentration	1.0mg/ml
Formulation	Supplied at 1.0mg/mL in phosphate buffered saline (without Mg2+ and Ca2+), pH 7.4, 150mM NaCl, 0.02% sodium azide and 50% glycerol.
Storage	Store at -20°C

## Application Details

WB 1:500 - 1:2000

## Images



Western blot analysis of extracts of various cell lines, using FCER1A .

## Background

Fc fragment of IgE, high affinity I, receptor for, alpha polypeptide, also known as high affinity immunoglobulin epsilon receptor subunit alpha, FCER1A and FCE1A, is a single-pass type I membrane protein which contains 2 immunoglobulin-like domains. FCER1A is a subunit of the IgE receptor, which is composed of one glycosylated alpha (FCER1A), one beta (FCER1B), and two gamma (FCER1G) subunits. The high affinity IgE receptor plays a central role in allergic disease, coupling allergen and mast cell to initiate the inflammatory and immediate hypersensitivity responses that are characteristic of disorders such as hay fever and asthma.

Note: This product is for in vitro research use only