

FCER2 Antibody

Catalog No: #32462



Package Size: #32462-1 50ul #32462-2 100ul

Orders: [order@signalwayantibody.com](mailto:order@signalwayantibody.com)  
Support: [tech@signalwayantibody.com](mailto:tech@signalwayantibody.com)

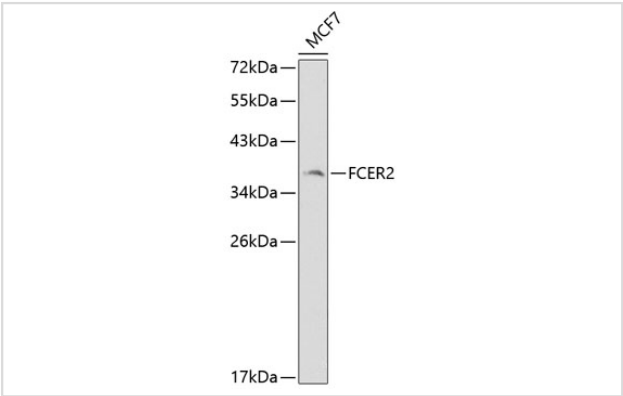
Description

Product Name	FCER2 Antibody
Host Species	Rabbit
Clonality	Polyclonal
Purification	Antibodies were purified by affinity purification using immunogen.
Applications	WB,IHC
Species Reactivity	Human,Mouse
Specificity	The antibody detects endogenous level of total FCER2 protein.
Immunogen Type	Recombinant Protein
Immunogen Description	Recombinant protein of human FCER2.
Target Name	FCER2
Other Names	CD23; FCE2; CD23A; IGEBF; CLEC4J
Accession No.	Swiss-Prot:P06734NCBI Gene ID:2208
Uniprot	P06734
GeneID	2208;
SDS-PAGE MW	36KD
Concentration	1.0mg/ml
Formulation	Supplied at 1.0mg/mL in phosphate buffered saline (without Mg2+ and Ca2+), pH 7.4, 150mM NaCl, 0.02% sodium azide and 50% glycerol.
Storage	Store at -20°C

Application Details

WB 1:500 - 1:2000IHC 1:50 - 1:100

Images



Western blot analysis of extracts of MCF-7 cells, using FCER2 at 1:1000 dilution.

## Background

---

The protein encoded by this gene is a B-cell specific antigen, and a low-affinity receptor for IgE. It has essential roles in B cell growth and differentiation, and the regulation of IgE production. This protein also exists as a soluble secreted form, then functioning as a potent mitogenic growth factor. Alternatively spliced transcript variants encoding different isoforms have been described for this gene.

---

Note: This product is for in vitro research use only