

AMBP Antibody

Catalog No: #32467

Package Size: #32467-1 50ul #32467-2 100ul

Orders: order@signalwayantibody.comSupport: tech@signalwayantibody.com

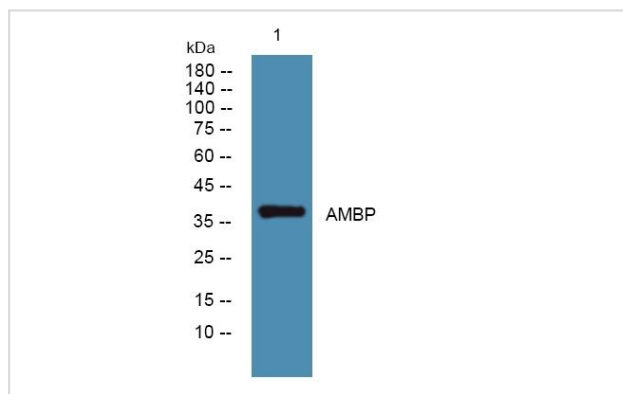
Description

| | |
|-----------------------|---|
| Product Name | AMBP Antibody |
| Host Species | Rabbit |
| Clonality | Polyclonal |
| Isotype | IgG |
| Purification | The antibody was affinity-purified from rabbit antiserum by affinity-chromatography using epitope-specific immunogen. |
| Applications | WB |
| Species Reactivity | Human;Mouse;Rat |
| Specificity | The antibody detects endogenous level of total AMBP protein. |
| Immunogen Type | Peptide |
| Immunogen Description | Synthesized peptide derived from part region of human protein |
| Target Name | AMBP |
| Other Names | AMBP;A1M;EDC1;HCP;HI30;IATIL;ITI;ITIL;ITILC;UTI |
| Accession No. | Uniprot:P02760GeneID:259 |
| Uniprot | P02760 |
| GeneID | 259 |
| SDS-PAGE MW | 38kDa |
| Concentration | 1.0mg/ml |
| Formulation | Liquid in PBS containing 50% glycerol, and 0.02% sodium azide. |
| Storage | Store at -20°C. Avoid freeze / thaw cycles. |

Application Details

WB 1:500-2000

Images



Western blot analysis of KB cells, using AMBP antibody 1:1000.

Background

This gene encodes a complex glycoprotein secreted in plasma. The precursor is proteolytically processed into distinct functioning proteins: alpha-1-microglobulin, which belongs to the superfamily of lipocalin transport proteins and may play a role in the regulation of inflammatory processes, and bikunin, which is a urinary trypsin inhibitor belonging to the superfamily of Kunitz-type protease inhibitors and plays an important role in many physiological and pathological processes. This gene is located on chromosome 9 in a cluster of lipocalin genes. [provided by RefSeq, Jul 2008],

Note: This product is for in vitro research use only