

CD247 Antibody

Catalog No: #32576

Package Size: #32576-1 50ul #32576-2 100ul

Orders: order@signalwayantibody.comSupport: tech@signalwayantibody.com

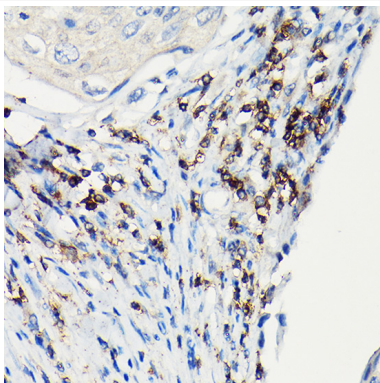
Description

| | |
|-----------------------|---|
| Product Name | CD247 Antibody |
| Host Species | Rabbit |
| Clonality | Polyclonal |
| Isotype | IgG |
| Purification | Affinity purification |
| Applications | WB,IHC,IF |
| Species Reactivity | Human,Mouse,Rat |
| Specificity | The antibody detects endogenous level of total CD247 protein. |
| Immunogen Type | Recombinant Protein |
| Immunogen Description | Recombinant fusion protein of human CD3H (NP_932170.1). |
| Target Name | CD247 |
| Other Names | CD247;CD3-ZETA;CD3H;CD3Q;CD3Z;IMD25;T3Z;TCRZ |
| Accession No. | Uniprot:P20963GeneID:919 |
| Uniprot | P20963 |
| GeneID | 919 |
| SDS-PAGE MW | 19KDa |
| Concentration | 1.0mg/ml |
| Formulation | PBS with 0.02% sodium azide,50% glycerol,pH7.3. |
| Storage | Store at -20°C. Avoid freeze / thaw cycles. |

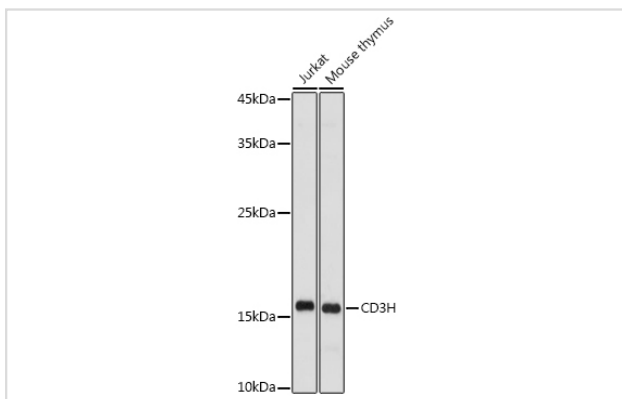
Application Details

WB□1:500 - 1:2000IHC□1:50 - 1:200IF□1:50 - 1:200

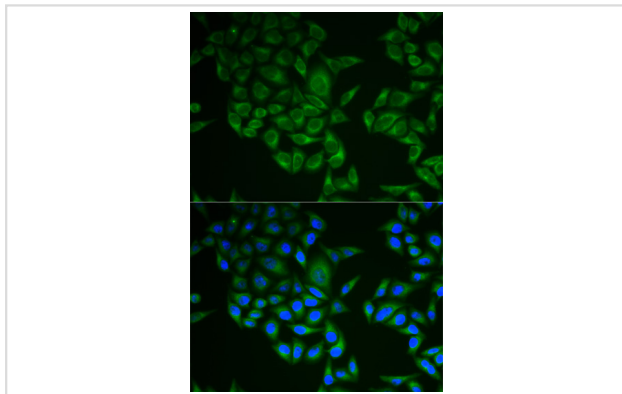
Images



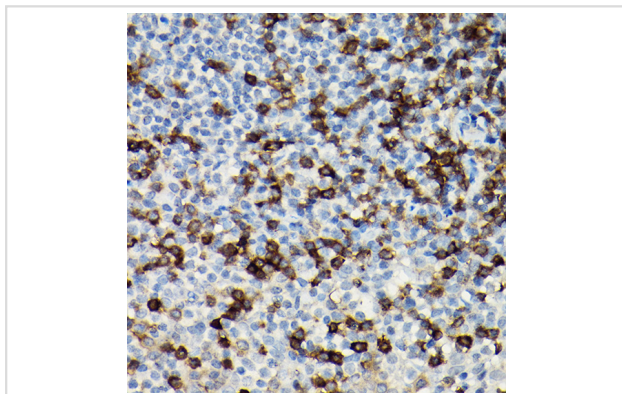
Immunohistochemistry of paraffin-embedded Human esophageal cancer using CD3H antibody.



Western blot analysis of extracts of various cell lines, using CD3H antibody.



Immunofluorescence analysis of A549 cells using CD3H antibody.



Immunohistochemistry of paraffin-embedded Human tonsil using CD3H antibody.

Background

The protein encoded by this gene is T-cell receptor zeta, which together with T-cell receptor alpha/beta and gamma/delta heterodimers, and with CD3-gamma, -delta and -epsilon, forms the T-cell receptor-CD3 complex. The zeta chain plays an important role in coupling antigen recognition to several intracellular signal-transduction pathways. Low expression of the antigen results in impaired immune response. Two alternatively spliced transcript variants encoding distinct isoforms have been found for this gene.

Note: This product is for in vitro research use only