

PDE1B Antibody

Catalog No: #32598

Package Size: #32598-1 50ul #32598-2 100ul

Orders: order@signalwayantibody.comSupport: tech@signalwayantibody.com

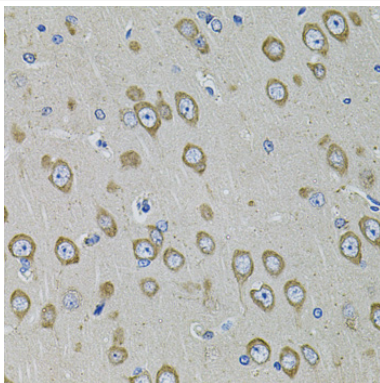
Description

Product Name	PDE1B Antibody
Host Species	Rabbit
Clonality	Polyclonal
Isotype	IgG
Purification	Affinity purification
Applications	WB,IHC
Species Reactivity	Human,Mouse,Rat
Specificity	The antibody detects endogenous level of total PDE1B protein.
Immunogen Type	Recombinant Protein
Immunogen Description	Recombinant fusion protein of human PDE1B (NP_000915.1).
Target Name	PDE1B
Other Names	PDE1B;HEL-S-79p;PDE1B1;PDES1B
Accession No.	Uniprot:Q01064GeneID:5153
Uniprot	Q01064
GeneID	5153
SDS-PAGE MW	59kDa
Concentration	1.0mg/ml
Formulation	PBS with 0.02% sodium azide,50% glycerol,pH7.3.
Storage	Store at -20°C. Avoid freeze / thaw cycles.

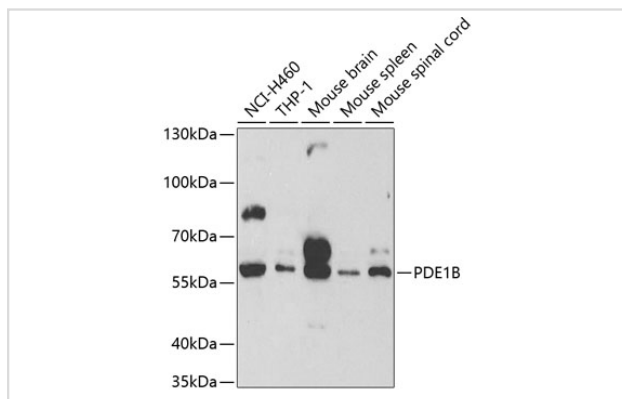
Application Details

WB□1:500 - 1:2000IHC□1:50 - 1:200

Images



Immunohistochemistry of paraffin-embedded rat brain using PDE1B antibody.



Western blot analysis of extracts of various cell lines, using PDE1B antibody.

Background

The protein encoded by this gene belongs to the cyclic nucleotide phosphodiesterase (PDE) family, and PDE1 subfamily. Members of the PDE1 family are calmodulin-dependent PDEs that are stimulated by a calcium-calmodulin complex. This PDE has dual-specificity for the second messengers, cAMP and cGMP, with a preference for cGMP as a substrate. cAMP and cGMP function as key regulators of many important physiological processes. Alternatively spliced transcript variants encoding different isoforms have been described for this gene.

Note: This product is for in vitro research use only