

PIN1 Antibody

Catalog No: #32599



Package Size: #32599-1 50ul #32599-2 100ul

Orders: [order@signalwayantibody.com](mailto:order@signalwayantibody.com)  
Support: [tech@signalwayantibody.com](mailto:tech@signalwayantibody.com)

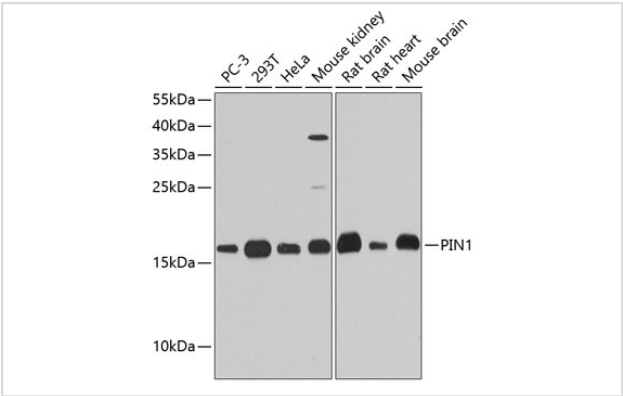
Description

Product Name	PIN1 Antibody
Host Species	Rabbit
Clonality	Polyclonal
Purification	Antibodies were purified by affinity purification using immunogen.
Applications	WB
Species Reactivity	Human,Mouse,Rat
Specificity	The antibody detects endogenous level of total PIN1 protein.
Immunogen Type	Recombinant Protein
Immunogen Description	Recombinant protein of human PIN1.
Target Name	PIN1
Other Names	DOD; UBL5;
Accession No.	Swiss-Prot:Q13526NCBI Gene ID:5300
Uniprot	Q13526
GeneID	5300;
SDS-PAGE MW	18KD
Concentration	1.0mg/ml
Formulation	Supplied at 1.0mg/mL in phosphate buffered saline (without Mg2+ and Ca2+), pH 7.4, 150mM NaCl, 0.02% sodium azide and 50% glycerol.
Storage	Store at -20°C

Application Details

WB 1:500 - 1:2000

Images



Western blot analysis of extracts of various cell lines, using PIN1 at 1:1000 dilution.

## Background

---

Pin1, a member of the parvulin family of peptidyl-prolyl isomerases (PPlase), has been implicated in the G2/M transition of the mammalian cell cycle (1-6). Pin1 is a small (18 kDa) protein with two distinct functional domains: an amino-terminal WW domain and a carboxy-terminal PPlase domain. Pin1 interacts with several mitotic phosphoproteins, including Plk1, cdc25C and cdc27, and is thought to act as a phosphorylation-dependent PPlase for these target molecules (7-9).

---

Note: This product is for in vitro research use only