

SORD Antibody

Catalog No: #32609



Package Size: #32609-1 50ul #32609-2 100ul

Orders: order@signalwayantibody.com
Support: tech@signalwayantibody.com

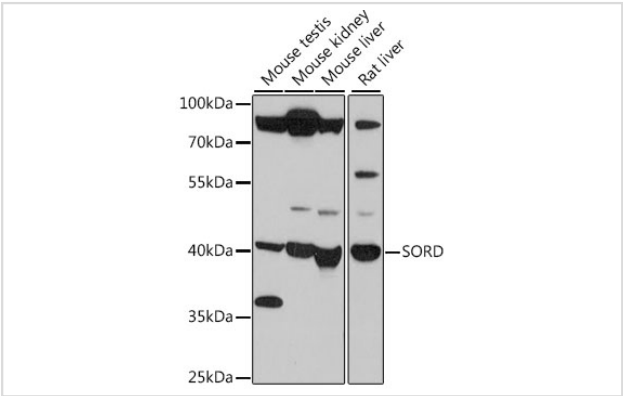
Description

Product Name	SORD Antibody
Host Species	Rabbit
Clonality	Polyclonal
Purification	Antibodies were purified by affinity purification using immunogen.
Applications	WB
Species Reactivity	Human,Mouse,Rat
Specificity	The antibody detects endogenous level of total SORD protein.
Immunogen Type	Recombinant Protein
Immunogen Description	Recombinant protein of human SORD.
Target Name	SORD
Other Names	SORD1;
Accession No.	Swiss-Prot:Q00796NCBI Gene ID:6652
Uniprot	Q00796
GeneID	6652;
SDS-PAGE MW	38KD
Concentration	1.0mg/ml
Formulation	Supplied at 1.0mg/mL in phosphate buffered saline (without Mg2+ and Ca2+), pH 7.4, 150mM NaCl, 0.02% sodium azide and 50% glycerol.
Storage	Store at -20°C

Application Details

WB 1:500 - 1:2000

Images



Western blot analysis of extracts of various cell lines, using SORD at 1:500 dilution.

Background

SORD(Sorbitol dehydrogenase) is also named as L-iditol 2-dehydrogenase and belongs to the zinc-containing alcohol dehydrogenase family. It catalyzes the interconversion of polyols and their corresponding ketoses, and together with aldose reductase, makes up the sorbitol pathway that is believed to play an important role in the development of diabetic complications. This protein can form a homotetramer(PMID:12962626).

Note: This product is for in vitro research use only