

HSPA8 Antibody

Catalog No: #32668

Package Size: #32668-1 50ul #32668-2 100ul

Orders: order@signalwayantibody.comSupport: tech@signalwayantibody.com

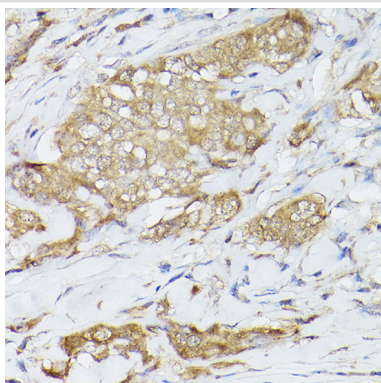
Description

Product Name	HSPA8 Antibody
Host Species	Rabbit
Clonality	Polyclonal
Isotype	IgG
Purification	Affinity purification
Applications	WB,IHC,IF
Species Reactivity	Human,Mouse,Rat
Specificity	The antibody detects endogenous level of total HSPA8 protein.
Immunogen Type	Recombinant Protein
Immunogen Description	Recombinant fusion protein of human Hsc70/HSPA8 (NP_006588.1).
Target Name	HSPA8
Other Names	HSPA8;HEL-33;HEL-S-72p;HSC54;HSC70;HSC71;HSP71;HSP73;HSPA10;LAP-1;LAP1;NIP71;Hsc70
Accession No.	Uniprot:P11142GeneID:3312
Uniprot	P11142
GeneID	3312
SDS-PAGE MW	72KDa
Concentration	1.0mg/ml
Formulation	PBS with 0.02% sodium azide,50% glycerol,pH7.3.
Storage	Store at -20°C. Avoid freeze / thaw cycles.

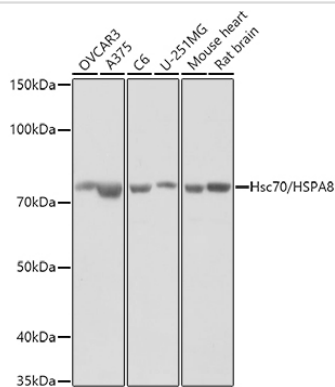
Application Details

WB□1:500 - 1:2000IHC□1:50 - 1:200IF□1:50 - 1:200

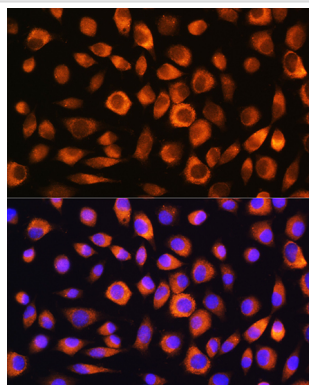
Images



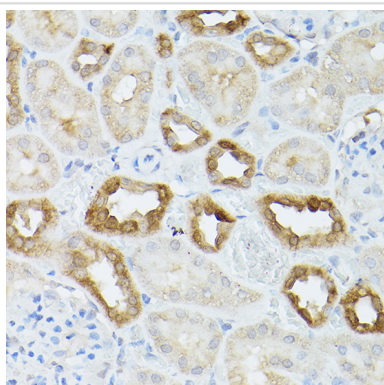
Immunohistochemistry of paraffin-embedded human breast cancer using Hsc70/HSPA8 Rabbit pAb.



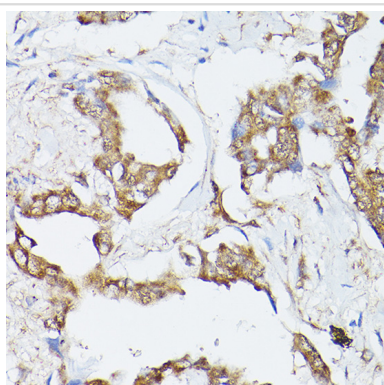
Western blot analysis of extracts of various cell lines, using .



Immunofluorescence analysis of L929 cells using Hsc70/HSPA8 Rabbit pAb.



Immunohistochemistry of paraffin-embedded mouse kidney using Hsc70/HSPA8 Rabbit pAb.



Immunohistochemistry of paraffin-embedded human lung cancer using Hsc70/HSPA8 Rabbit pAb.

Background

This gene encodes a member of the heat shock protein 70 family, which contains both heat-inducible and constitutively expressed members. This protein belongs to the latter group, which are also referred to as heat-shock cognate proteins. It functions as a chaperone, and binds to nascent polypeptides to facilitate correct folding. It also functions as an ATPase in the disassembly of clathrin-coated vesicles during transport of membrane components through the cell. Alternatively spliced transcript variants encoding different isoforms have been found for this gene.

Note: This product is for in vitro research use only