

LTBR Antibody

Catalog No: #32792



Package Size: #32792-1 50ul #32792-2 100ul

Orders: order@signalwayantibody.com
Support: tech@signalwayantibody.com

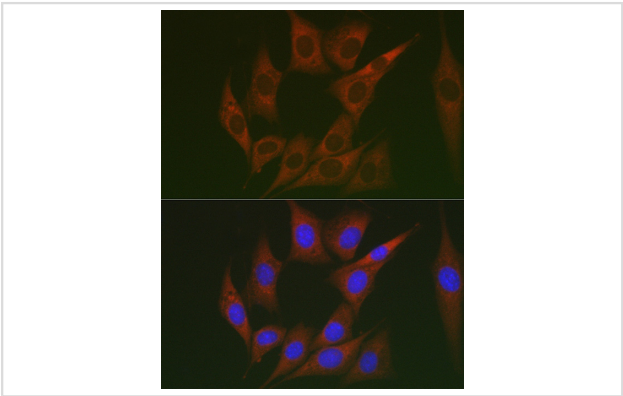
Description

Product Name	LTBR Antibody
Host Species	Rabbit
Clonality	Polyclonal
Isotype	IgG
Purification	Affinity purification
Applications	WB,IF
Species Reactivity	Human,Mouse,Rat
Specificity	The antibody detects endogenous level of total LTBR protein.
Immunogen Type	Recombinant Protein
Immunogen Description	Recombinant fusion protein of human Lumican (LUM)ican (Lumican (LUM)) (NP_002336.1).
Target Name	LTBR
Other Names	LUM;LDC;SLRR2D;lumican
Accession No.	Uniprot:P51884GeneID:4060
Uniprot	P51884
GeneID	4060
SDS-PAGE MW	50-100KDa
Concentration	1.0mg/ml
Formulation	PBS with 0.02% sodium azide,50% glycerol,pH7.3.
Storage	Store at -20°C. Avoid freeze / thaw cycles.

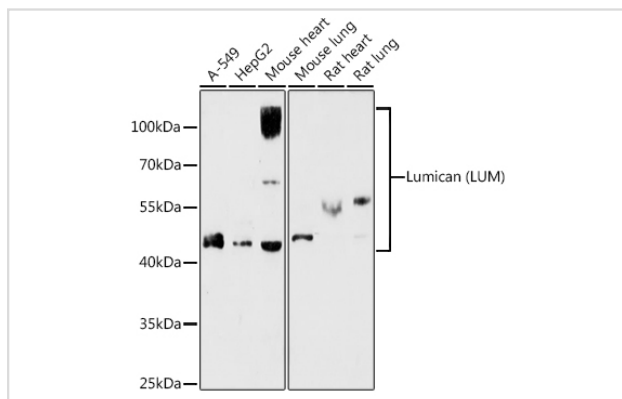
Application Details

WB 1:500 - 1:2000IF 1:50 - 1:200

Images



Immunofluorescence analysis of NIH/3T3 cells using Lumican (LUM) Rabbit pAb.



Western blot analysis of extracts of various cell lines, using Lumican (LUM) antibody.

Background

This gene encodes a member of the small leucine-rich proteoglycan (SLRP) family that includes decorin, biglycan, fibromodulin, keratocan, epiphykan, and osteoglycin. In these bifunctional molecules, the protein moiety binds collagen fibrils and the highly charged hydrophilic glycosaminoglycans regulate interfibrillar spacings. Lumican is the major keratan sulfate proteoglycan of the cornea but is also distributed in interstitial collagenous matrices throughout the body. Lumican may regulate collagen fibril organization and circumferential growth, corneal transparency, and epithelial cell migration and tissue repair.

Note: This product is for in vitro research use only