

## Opioid Receptor(Ab-375) Antibody

Catalog No: #21313

Package Size: #21313-1 50ul #21313-2 100ul

Orders: [order@signalwayantibody.com](mailto:order@signalwayantibody.com)Support: [tech@signalwayantibody.com](mailto:tech@signalwayantibody.com)

## Description

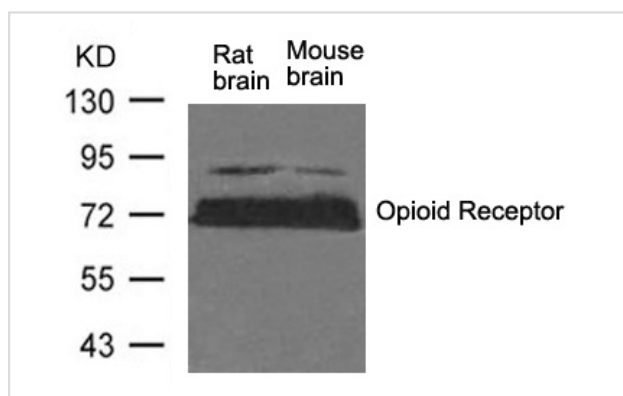
Product Name	Opioid Receptor(Ab-375) Antibody
Host Species	Rabbit
Clonality	Polyclonal
Purification	Antibodies were produced by immunizing rabbits with synthetic peptide and KLH conjugates. Antibodies were purified by affinity-chromatography using epitope-specific peptide.
Applications	WB
Species Reactivity	Ms Rt
Specificity	The antibody detects endogenous level of total Opioid Receptor protein.
Immunogen Type	Peptide-KLH
Immunogen Description	Peptide sequence around aa.373~377 (H-P-S-T-A) derived from Mouse Opioid Receptor.
Target Name	Opioid Receptor
Other Names	MOR; MUOR1; Mu-type opioid receptor; OPRM; OPRM1
Accession No.	Swiss-Prot: P42866NCBI Gene ID: 18390NCBI Protein: NP_000905.3
Uniprot	P42866
GeneID	18390;
Concentration	1.0mg/ml
Formulation	Supplied at 1.0mg/mL in phosphate buffered saline (without Mg <sup>2+</sup> and Ca <sup>2+</sup> ), pH 7.4, 150mM NaCl, 0.02% sodium azide and 50% glycerol.
Storage	Store at -20°C for long term preservation (recommended). Store at 4°C for short term use.

## Application Details

Predicted MW: 70-90kd

Western blotting: 1:500~1:1000

## Images



Western blot analysis of extracts from Rat brain and Mouse brain tissue using Opioid Receptor(Ab-375) Antibody #21313.

## Background

---

Inhibits neurotransmitter release by reducing calcium ion currents and increasing potassium ion conductance. Receptor for beta-endorphin.  
Rodr

---

Note: This product is for in vitro research use only