

## SHP-2(Ab-542) Antibody

Catalog No: #21319

Package Size: #21319-1 50ul #21319-2 100ul

Orders: [order@signalwayantibody.com](mailto:order@signalwayantibody.com)Support: [tech@signalwayantibody.com](mailto:tech@signalwayantibody.com)

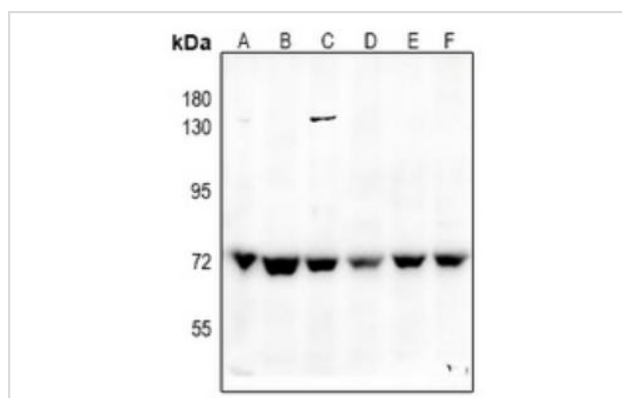
## Description

Product Name	SHP-2(Ab-542) Antibody
Host Species	Rabbit
Clonality	Polyclonal
Purification	The antibody was purified by immunogen affinity chromatography.
Applications	WB, IHC, IF/ICC
Species Reactivity	Hu Ms Rt
Specificity	The antibody detects endogenous level of SHP-2 protein.
Immunogen Type	Peptide-KLH
Immunogen Description	KLH-conjugated synthetic peptide encompassing a sequence within the C-term region of human SHPTP2. The exact sequence is proprietary.
Target Name	SHP-2
Other Names	Protein-tyrosine phosphatase 2C
Accession No.	Swiss-Prot: Q06124NCBI Protein: NP_002825.3
Uniprot	Q06124
GeneID	5781;
Concentration	1mg/ml
Formulation	Liquid in 0.42% Potassium phosphate, 0.87% Sodium chloride, pH 7.3, 30% glycerol, and 0.01% sodium azide.
Storage	Shipped at 4°C. Upon delivery aliquot and store at -20°C for one year. Avoid freeze/thaw cycles.

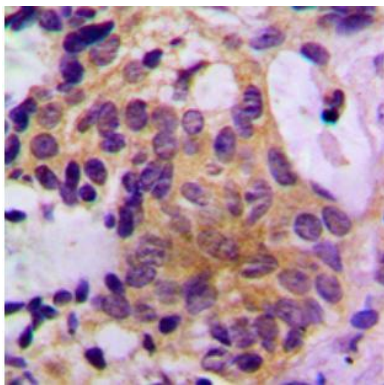
## Application Details

WB 1/500 - 1/1000, IHC 1/50 - 1/100, IF/ICC 1/50 - 1/200

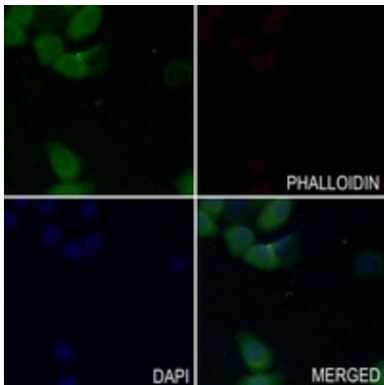
## Images



Western blot analysis of SHPTP2 expression in C6 (A), SGC7901(B), H1792 (C), SKOV3 (D), A2780 (E), Hela (F) whole celllysates.



Immunohistochemical analysis of SHPTP2 staining in human breast cancer formalin fixed paraffin embedded tissue section. The section was pre-treated using heat mediated antigen retrieval with sodium citrate buffer (pH 6.0). The section was then incubated with the antibody at room temperature and detected using an HRP conjugated compact polymer system. DAB was used as the chromogen. The section was then counterstained with haematoxylin and mounted with DPX.



Immunofluorescent analysis of SHPTP2 staining in SGC7901 cells. Formalin-fixed cells were permeabilized with 0.1% TritonX-100 in TBS for 5-10 minutes and blocked with 3% BSA-PBS for 30 minutes at room temperature. Cells were probed with the primary antibody in 3% BSA-PBS and incubated overnight at 4 °C in a humidified chamber. Cells were washed with PBST and incubated with a AF488-conjugated secondary antibody (green) in PBS at room temperature in the dark. Phalloidin -AF594 was used to stain Actin filaments (red). DAPI was used to stain the cell nuclei (blue).

## Background

Acts downstream of various receptor and cytoplasmic protein tyrosine kinases to participate in the signal transduction from the cell surface to the nucleus.

Ferjoux G, et al. (2003) Mol Biol Cell. 2003; 14(9): 3911-3928.

Shi ZQ, et al. (2000) Mol Cell Biol ; 20(5): 1526-1536.

Li C, Friedman JM. (1999) Proc Natl Acad Sci U S A ; 96(17): 9677-9682

Manes S, et al. (1999) Mol Cell Biol ; 19(4): 3125-3135.

Oh ES, et al. (1999) Mol Cell Biol; 19(4): 3205-3215.

Note: This product is for in vitro research use only