

GFER Antibody

Catalog No: #32864



Package Size: #32864-1 50ul #32864-2 100ul

Orders: order@signalwayantibody.com
Support: tech@signalwayantibody.com

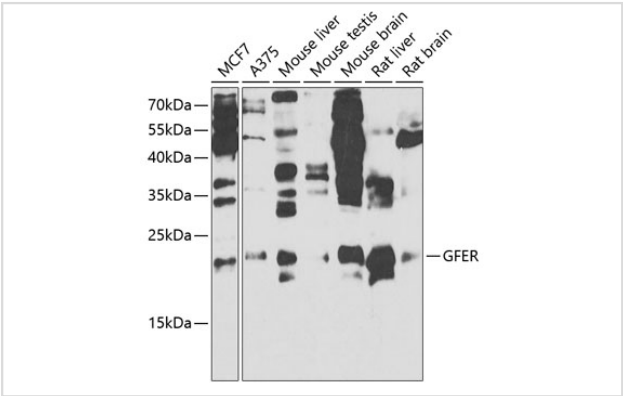
Description

Product Name	GFER Antibody
Host Species	Rabbit
Clonality	Polyclonal
Isotype	IgG
Purification	Affinity purification
Applications	WB
Species Reactivity	Human,Mouse,Rat
Specificity	The antibody detects endogenous level of total GFER protein.
Immunogen Type	Recombinant Protein
Immunogen Description	Recombinant fusion protein of human GFER (NP_005253.3).
Target Name	GFER
Other Names	GFER;ALR;ERV1;HERV1;HPO;HPO1;HPO2;HSS
Accession No.	Uniprot:P55789GeneID:2671
Uniprot	P55789
GeneID	2671
SDS-PAGE MW	23kDa
Concentration	1.0mg/ml
Formulation	PBS with 0.02% sodium azide,50% glycerol,pH7.3.
Storage	Store at -20°C. Avoid freeze / thaw cycles.

Application Details

WB 1:500 - 1:2000

Images



Western blot analysis of extracts of various cell lines, using GFER antibody.

Background

The hepatotrophic factor designated augmenter of liver regeneration (ALR) is thought to be one of the factors responsible for the extraordinary regenerative capacity of mammalian liver. It has also been called hepatic regenerative stimulation substance (HSS). The gene resides on chromosome 16 in the interval containing the locus for polycystic kidney disease (PKD1). The putative gene product is 42% similar to the scERV1 protein of yeast. The yeast scERV1 gene had been found to be essential for oxidative phosphorylation, the maintenance of mitochondrial genomes, and the cell division cycle. The human gene is both the structural and functional homolog of the yeast scERV1 gene.

Note: This product is for in vitro research use only