

## SLC3A1 Antibody

Catalog No: #32890

Package Size: #32890-1 50ul #32890-2 100ul

Orders: [order@signalwayantibody.com](mailto:order@signalwayantibody.com)Support: [tech@signalwayantibody.com](mailto:tech@signalwayantibody.com)

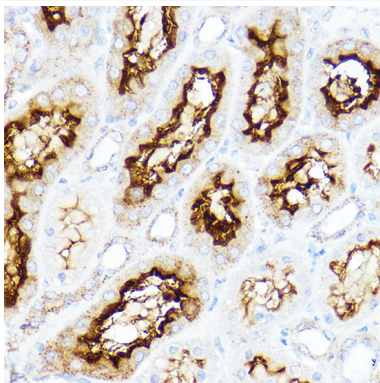
## Description

Product Name	SLC3A1 Antibody
Host Species	Rabbit
Clonality	Polyclonal
Isotype	IgG
Purification	Affinity purification
Applications	WB,IHC
Species Reactivity	Human,Mouse,Rat
Specificity	The antibody detects endogenous level of total SLC3A1 protein.
Immunogen Type	Recombinant Protein
Immunogen Description	Recombinant fusion protein of human SLC3A1 (NP_000332.2).
Target Name	SLC3A1
Other Names	SLC3A1;ATR1;CSNU1;D2H;NBAT;RBAT
Accession No.	Uniprot:Q07837GeneID:6519
Uniprot	Q07837
GeneID	6519
SDS-PAGE MW	79kDa
Concentration	1.0mg/ml
Formulation	PBS with 0.02% sodium azide,50% glycerol,pH7.3.
Storage	Store at -20°C. Avoid freeze / thaw cycles.

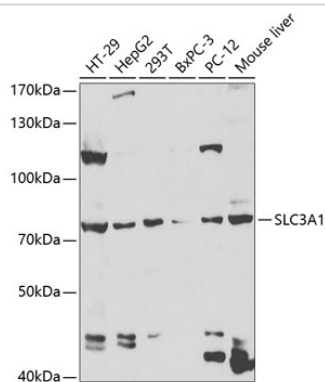
## Application Details

WB□1:500 - 1:2000IHC□1:50 - 1:200

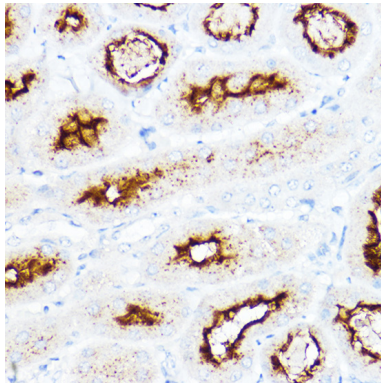
## Images



Immunohistochemistry of paraffin-embedded rat kidney using SLC3A1 Rabbit pAb.



Western blot analysis of extracts of various cell lines, using SLC3A1 antibody.



Immunohistochemistry of paraffin-embedded mouse kidney using SLC3A1 Rabbit pAb.

## Background

This gene encodes a type II membrane glycoprotein which is one of the components of the renal amino acid transporter which transports neutral and basic amino acids in the renal tubule and intestinal tract. Mutations and deletions in this gene are associated with cystinuria. Alternatively spliced transcript variants have been described, but their biological validity has not been determined.

Note: This product is for in vitro research use only