

CDC5L Antibody

Catalog No: #32911



Package Size: #32911-1 50ul #32911-2 100ul

Orders: order@signalwayantibody.com
Support: tech@signalwayantibody.com

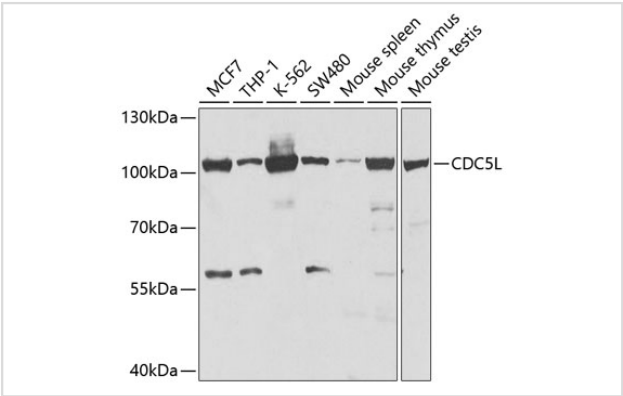
Description

Product Name	CDC5L Antibody
Host Species	Rabbit
Clonality	Polyclonal
Isotype	IgG
Purification	Affinity purification
Applications	WB,IHC
Species Reactivity	Human,Mouse
Specificity	The antibody detects endogenous level of total CDC5L protein.
Immunogen Type	Recombinant Protein
Immunogen Description	Recombinant fusion protein of human CDC5L (NP_001244.1).
Target Name	CDC5L
Other Names	CDC5L;CDC5;CDC5-LIKE;CEF1;PCDC5RP;dJ319D22.1
Accession No.	Uniprot:Q99459GeneID:988
Uniprot	Q99459
GeneID	988
SDS-PAGE MW	107kDa
Concentration	1.0mg/ml
Formulation	PBS with 0.02% sodium azide,50% glycerol,pH7.3.
Storage	Store at -20°C. Avoid freeze / thaw cycles.

Application Details

WB 1:500 - 1:2000IHC 1:50 - 1:200

Images



Western blot analysis of extracts of various cell lines, using CDC5L antibody.

Background

The protein encoded by this gene shares a significant similarity with *Schizosaccharomyces pombe* cdc5 gene product, which is a cell cycle regulator important for G2/M transition. This protein has been demonstrated to act as a positive regulator of cell cycle G2/M progression. It was also found to be an essential component of a non-snRNA spliceosome, which contains at least five additional protein factors and is required for the second catalytic step of pre-mRNA splicing.

Note: This product is for in vitro research use only