

TPP1 Antibody

Catalog No: #32932



Package Size: #32932-1 50ul #32932-2 100ul

Orders: order@signalwayantibody.com
Support: tech@signalwayantibody.com

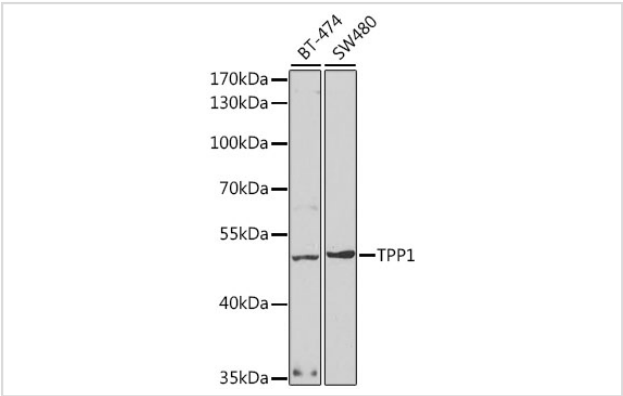
Description

Product Name	TPP1 Antibody
Host Species	Rabbit
Clonality	Polyclonal
Purification	Antibodies were purified by affinity purification using immunogen.
Applications	WB
Species Reactivity	Human,Mouse
Specificity	The antibody detects endogenous level of total TPP1 protein.
Immunogen Type	Recombinant Protein
Immunogen Description	Recombinant protein of human TPP1.
Target Name	TPP1
Other Names	CLN2; GIG1; LPIC; TPP-1;
Accession No.	Swiss-Prot:O14773NCBI Gene ID:1200
Uniprot	O14773
GeneID	1200;
SDS-PAGE MW	61KD
Concentration	1.0mg/ml
Formulation	Supplied at 1.0mg/mL in phosphate buffered saline (without Mg2+ and Ca2+), pH 7.4, 150mM NaCl, 0.02% sodium azide and 50% glycerol.
Storage	Store at -20°C

Application Details

WB 1:500 - 1:2000

Images



Western blot analysis of extracts of various cell lines, using TPP1 at 1:1000 dilution.

Background

This gene encodes a member of the sedolisin family of serine proteases. The protease functions in the lysosome to cleave N-terminal tripeptides from substrates, and has weaker endopeptidase activity. It is synthesized as a catalytically-inactive enzyme which is activated and auto-proteolyzed upon acidification. Mutations in this gene result in late-infantile neuronal ceroid lipofuscinosis, which is associated with the failure to degrade specific neuropeptides and a subunit of ATP synthase in the lysosome.

Note: This product is for in vitro research use only