

Niban-like protein(Ab-712) Antibody

Catalog No: #21332

Package Size: #21332-1 50ul #21332-2 100ul

Orders: order@signalwayantibody.comSupport: tech@signalwayantibody.com

Description

Product Name	Niban-like protein(Ab-712) Antibody
Host Species	Rabbit
Clonality	Polyclonal
Purification	Antibodies were produced by immunizing rabbits with synthetic peptide and KLH conjugates. Antibodies were purified by affinity-chromatography using epitope-specific peptide.
Applications	WB IF
Species Reactivity	Hu Ms
Specificity	The antibody detects endogenous level of total Niban-like protein. 1protein.
Immunogen Type	Peptide-KLH
Immunogen Description	Peptide sequence around aa.710~714 (Q-V-S-S-P) derived from Human Niban-like protein.
Target Name	Niban-like protein
Accession No.	Swiss-Prot: Q96TA1NCBI Protein: NP_001030611.1
Uniprot	Q96TA1
GeneID	64855;
Concentration	1.0mg/ml
Formulation	Supplied at 1.0mg/mL in phosphate buffered saline (without Mg ²⁺ and Ca ²⁺), pH 7.4, 150mM NaCl, 0.02% sodium azide and 50% glycerol.
Storage	Store at -20°C for long term preservation (recommended). Store at 4°C for short term use.

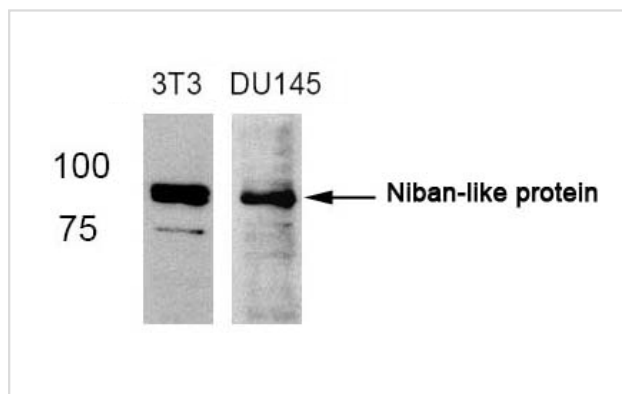
Application Details

Predicted MW: 82kd

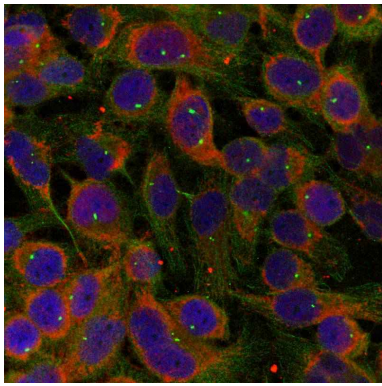
Western blotting: 1:500~1:1000

Immunofluorescence: 1:100~1:200

Images



Western blot analysis of extracts from 3T3 and DU145 cells using Niban-like protein(Ab-712) antibody #21332.



Immunofluorescence staining of methanol-fixed HeLa cells using Niban-like protein(Ab-712) antibody #21332.

Background

a maternal imprinting gene. May possess growth suppressor activity. Two major alternatively spliced isoforms have been described. forms. One form, Meg3-proximal (Meg3p), contains exons 1-3. The second form, Meg3-distal (Meg3d) did not contain exons 1-3 and was present in oocytes and in 1- and 2-cell embryos

Adachi H, Majima S, et al. Oncogene. 2004 Apr 22;23(19):3495-500

Matsumoto F, Fujii H, et al. Hum Pathol. 2006 Dec; 37(12):1592-600.

Note: This product is for in vitro research use only