

## PRL-3 Antibody

Catalog No: #21333

Package Size: #21333-1 50ul #21333-2 100ul

Orders: [order@signalwayantibody.com](mailto:order@signalwayantibody.com)Support: [tech@signalwayantibody.com](mailto:tech@signalwayantibody.com)

## Description

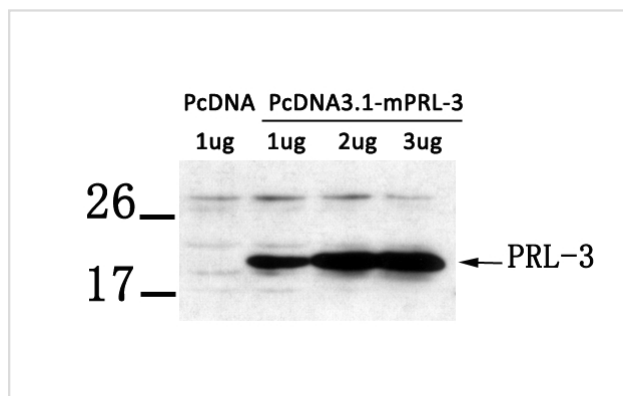
Product Name	PRL-3 Antibody
Host Species	Rabbit
Clonality	Polyclonal
Purification	Antibodies were produced by immunizing rabbits with synthetic peptide and KLH conjugates. Antibodies were purified by affinity-chromatography using epitope-specific peptide.
Applications	WB
Species Reactivity	Hu Ms Rt
Specificity	The antibody detects transfected PRL-3 protein.
Immunogen Type	Peptide-KLH
Immunogen Description	Peptide sequence around aa. 161-166 (K-D-P-H-T) derived from Human PTP4A3.
Target Name	PRL-3
Other Names	protein tyrosine phosphatase type IVA; PRL3; PRL-R; PTP4A3;
Accession No.	Swiss-Prot: O75365NCBI Protein: NP_116000
Uniprot	O75365
GeneID	11156;
Concentration	1.0mg/ml
Formulation	Supplied at 1.0mg/mL in phosphate buffered saline (without Mg <sup>2+</sup> and Ca <sup>2+</sup> ), pH 7.4, 150mM NaCl, 0.02% sodium azide and 50% glycerol.
Storage	Store at -20°C for long term preservation (recommended). Store at 4°C for short term use.

## Application Details

Predicted MW: 22kd

Western blotting: 1:500~1:1000

## Images



Western blot analysis of extract from LX-2 cells transfected with PRL-3 using PRL-3 antibody #21333.

## Background

Protein tyrosine phosphatase which stimulates progression from G1 into S phase during mitosis. Enhances cell proliferation, cell motility and invasive activity, and promotes cancer metastasis. May be involved in the progression of cardiac hypertrophy by inhibiting intracellular calcium mobilization in response to angiotensin II.

Matter W.F. et.al. Biochem. Biophys. Res. Commun. 283:1061-1068(2001)

Wang J.et.al. J. Biol. Chem. 277:46659-46668(2002)

---

Note: This product is for in vitro research use only