

TRPC6 Antibody

Catalog No: #21403



Package Size: #21403-1 50ul #21403-2 100ul

Orders: order@signalwayantibody.com
Support: tech@signalwayantibody.com

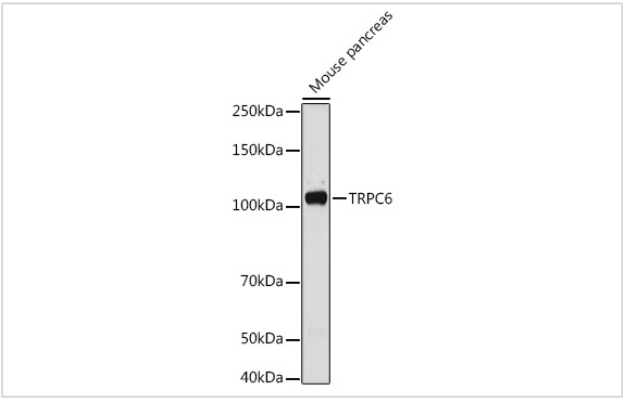
Description

Product Name	TRPC6 Antibody
Host Species	Rabbit
Clonality	Polyclonal
Isotype	IgG
Purification	Affinity purification
Applications	WB,IHC
Species Reactivity	Human,Mouse,Rat
Specificity	The antibody was affinity-purified from rabbit antiserum by affinity-chromatography using epitope-specific immunogen.
Immunogen Type	Peptide-KLH
Immunogen Description	A synthetic peptide of human TRPC6 (NP_004612.2).
Target Name	TRPC6
Other Names	TRPC6;FSGS2;TRP6
Accession No.	Uniprot:Q9Y210GeneID:7225
Uniprot	Q9Y210
GeneID	7225
SDS-PAGE MW	106KDa
Concentration	1.0mg/ml
Formulation	PBS with 0.02% sodium azide,50% glycerol,pH7.3.
Storage	Store at -20°C. Avoid freeze / thaw cycles.

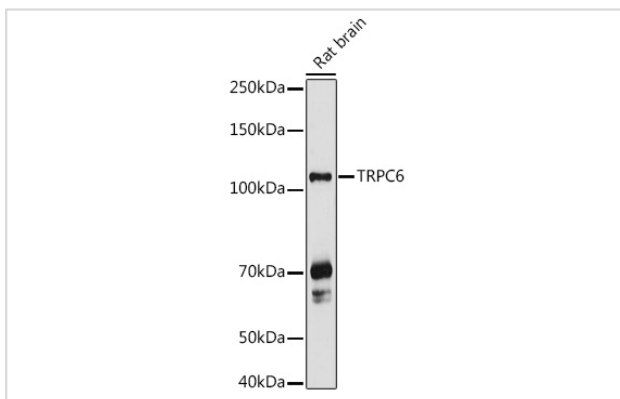
Application Details

WB 1:500 - 1:2000IHC 1:50 - 1:200

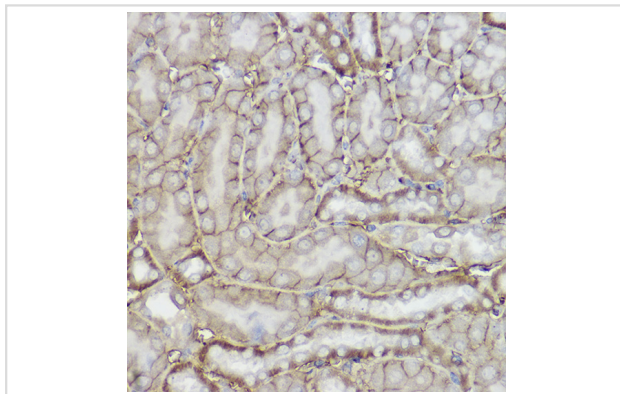
Images



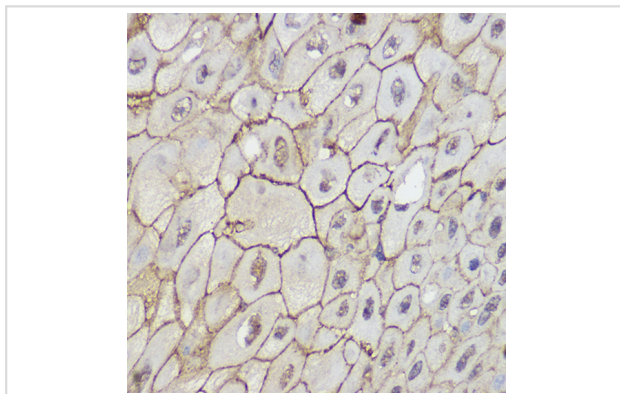
Western blot analysis of extracts of Mouse pancreas, using TRPC6 antibody.



Western blot analysis of extracts of Rat brain, using TRPC6 antibody.



Immunohistochemistry of paraffin-embedded mouse kidney using TRPC6 Rabbit pAb.



Immunohistochemistry of paraffin-embedded human esophageal cancer using TRPC6 Rabbit pAb.

Background

The protein encoded by this gene forms a receptor-activated calcium channel in the cell membrane. The channel is activated by diacylglycerol and is thought to be under the control of a phosphatidylinositol second messenger system. Activation of this channel occurs independently of protein kinase C and is not triggered by low levels of intracellular calcium. Defects in this gene are a cause of focal segmental glomerulosclerosis 2 (FSGS2).

Note: This product is for in vitro research use only