

PP2A-a Antibody

Catalog No: #21405

Package Size: #21405-1 50ul #21405-2 100ul

Orders: order@signalwayantibody.comSupport: tech@signalwayantibody.com

Description

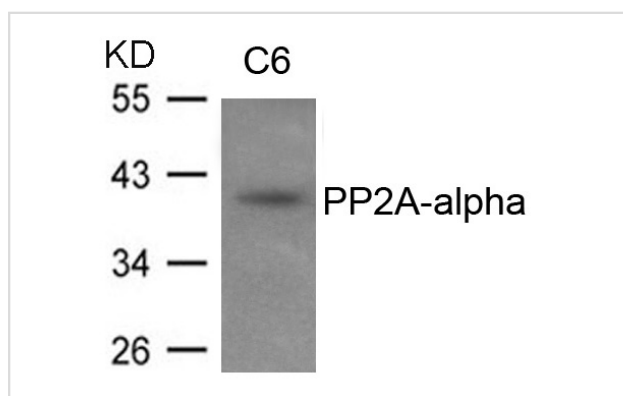
Product Name	PP2A-a Antibody
Host Species	Rabbit
Clonality	Polyclonal
Purification	Antibodies were produced by immunizing rabbits with synthetic peptide and KLH conjugates. Antibodies were purified by affinity-chromatography using epitope-specific peptide.
Applications	WB
Species Reactivity	Hu Ms Rt
Specificity	The antibody was affinity-purified from rabbit antiserum by affinity-chromatography using epitope-specific immunogen.
Immunogen Type	Peptide-KLH
Immunogen Description	Peptide Corresponding to the amino terminal sequence derived from human PP2A-alpha.
Target Name	PP2A-a
Other Names	PR52A; PR55A; B55A; B55ALPHA;
Accession No.	Swiss-Prot: P67775NCBI Protein: NP_001171062.1
Uniprot	P67775
GeneID	5515;
Concentration	1.0mg/ml
Formulation	Supplied at 1.0mg/mL in phosphate buffered saline (without Mg ²⁺ and Ca ²⁺), pH 7.4, 150mM NaCl, 0.02% sodium azide and 50% glycerol.
Storage	Store at -20°C for long term preservation (recommended). Store at 4°C for short term use.

Application Details

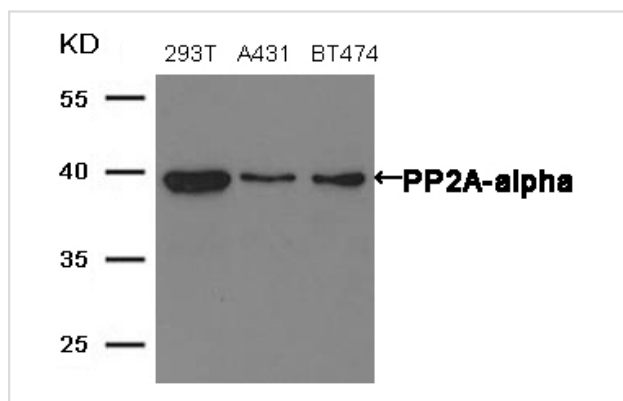
Predicted MW: 40kd

Western blotting: 1:500~1:1000

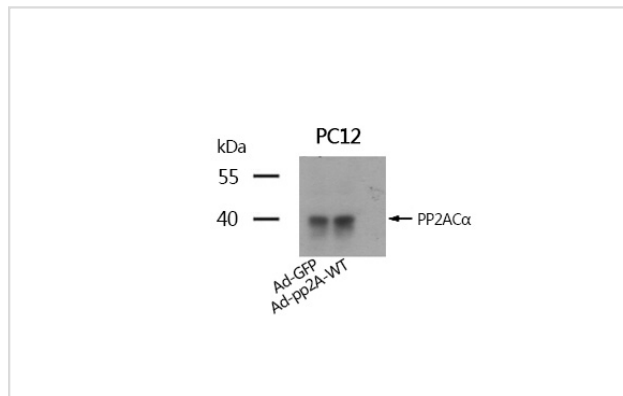
Images



Western blot analysis of extracts from C6 cells using PP2A-alpha antibody #21405.



Western blot analysis of extracts from 293T • A431 and BT474 cells using PP2A-alpha antibody #21405.



Western blotting analysis using PP2A-a Antibody #21405.

Background

The B regulatory subunit might modulate substrate selectivity and catalytic activity, and also might direct the localization of the catalytic enzyme to a particular subcellular compartment.

Yu, X.X. et al. (2001) Mol. Biol. Cell 12, 185-199.

Tolstykh, T. et al. (2000) EMBO J. 19, 5682-5691.

Janssens, V. and Goris, J. (2001) Biochem. J. 353, 417-439.

Note: This product is for in vitro research use only