

Melanoma-associated antigen D1 Antibody

Catalog No: #21408



Package Size: #21408-1 50ul #21408-2 100ul

Orders: order@signalwayantibody.com
Support: tech@signalwayantibody.com

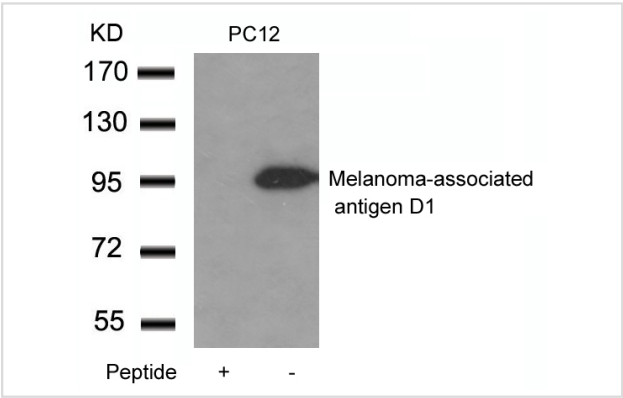
Description

Product Name	Melanoma-associated antigen D1 Antibody
Host Species	Rabbit
Clonality	Polyclonal
Purification	Antibodies were produced by immunizing rabbits with synthetic peptide and KLH conjugates. Antibodies were purified by affinity-chromatography using epitope-specific peptide.
Applications	WB
Species Reactivity	Hu Ms Rt
Specificity	The antibody detects endogenous level of total Melanoma-associated antigen D1 protein.
Immunogen Type	Peptide-KLH
Immunogen Description	Peptide with sequence C-EAEARAEARNRMGIGDE derived from Mouse Melanoma-associated antigen D1.
Target Name	Melanoma-associated antigen D1
Other Names	MAGED1
Accession No.	Swiss-Prot: Q9QYH6 NCBI Protein: NP_062765.1
Uniprot	Q9QYH6
GeneID	94275;
Concentration	1.0mg/ml
Formulation	Supplied at 1.0mg/mL in phosphate buffered saline (without Mg2+ and Ca2+), pH 7.4, 150mM NaCl, 0.02% sodium azide and 50% glycerol.
Storage	Store at -20°C for long term preservation (recommended). Store at 4°C for short term use.

Application Details

Predicted MW: 95kd
Western blotting: 1:500~1:1000

Images



Background

Involved in the apoptotic response after nerve growth factor (NGF) binding in neuronal cells. Binds p75NTR and antagonizes its association with TrkA, inhibits cell cycle progression, and facilitates p75NTR-mediated apoptosis. May act as a regulator of the function of DLX family members. May regulate p53 transcriptional activity and inhibit cell proliferation. Enhances p53 phosphorylation and accumulation.

Zhao Z,et al.(2002) Sci China C Life Sci.45(4):412-20.

Shen WG,et al.(2007) Cell Commun Adhes.14(1):21-31.

Cheresh DA,et al. (1984) J Biol Chem.259(12):7453-9.

Note: This product is for in vitro research use only