

# SMARCB1 Antibody

Catalog No: #33029



Package Size: #33029-1 50ul #33029-2 100ul

Orders: [order@signalwayantibody.com](mailto:order@signalwayantibody.com)  
Support: [tech@signalwayantibody.com](mailto:tech@signalwayantibody.com)

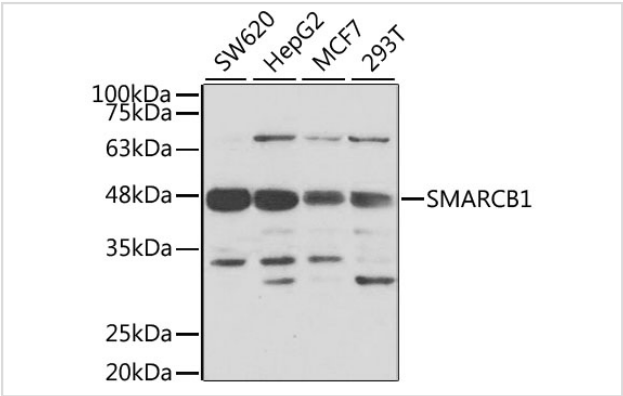
## Description

Product Name	SMARCB1 Antibody
Host Species	Rabbit
Clonality	Polyclonal
Purification	Antibodies were purified by affinity purification using immunogen.
Applications	WB,IHC,IF
Species Reactivity	Human,Mouse,Rat
Specificity	The antibody detects endogenous level of total SMARCB1 protein.
Immunogen Type	Recombinant Protein
Immunogen Description	Recombinant protein of human SMARCB1.
Target Name	SMARCB1
Other Names	RDT; INI1; SNF5; Snr1; BAF47
Accession No.	Swiss-Prot:Q12824NCBI Gene ID:6598
Uniprot	Q12824
GeneID	6598;
SDS-PAGE MW	44KD
Concentration	1.0mg/ml
Formulation	Supplied at 1.0mg/mL in phosphate buffered saline (without Mg2+ and Ca2+), pH 7.4, 150mM NaCl, 0.02% sodium azide and 50% glycerol.
Storage	Store at -20°C

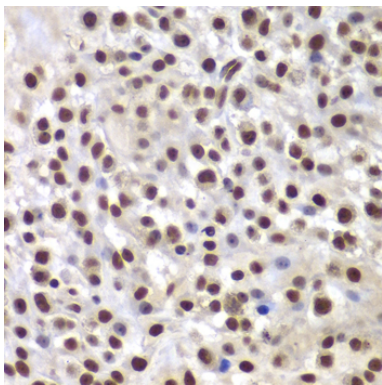
## Application Details

WB 1:500 - 1:2000IHC 1:50 - 1:200IF 1:50 - 1:200

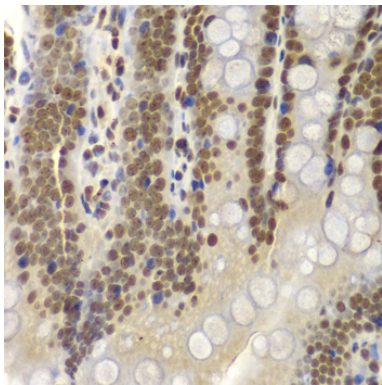
## Images



Western blot analysis of extracts of various cell lines, using SMARCB1 at 1:1000 dilution.



Immunohistochemistry of paraffin-embedded mouse osteosarcoma using SMARCB1 at dilution of 1:200 (40x lens).



Immunohistochemistry of paraffin-embedded rat Intestine using SMARCB1 at dilution of 1:200 (40x lens).

## Background

The protein encoded by this gene is part of a complex that relieves repressive chromatin structures, allowing the transcriptional machinery to access its targets more effectively. The encoded nuclear protein may also bind to and enhance the DNA joining activity of HIV-1 integrase. This gene has been found to be a tumor suppressor, and mutations in it have been associated with malignant rhabdoid tumors. Two transcript variants encoding different isoforms have been found for this gene.

**Note:** This product is for in vitro research use only