

# SLAMF7 Antibody

Catalog No: #33044



Package Size: #33044-1 50ul #33044-2 100ul

Orders: [order@signalwayantibody.com](mailto:order@signalwayantibody.com)  
Support: [tech@signalwayantibody.com](mailto:tech@signalwayantibody.com)

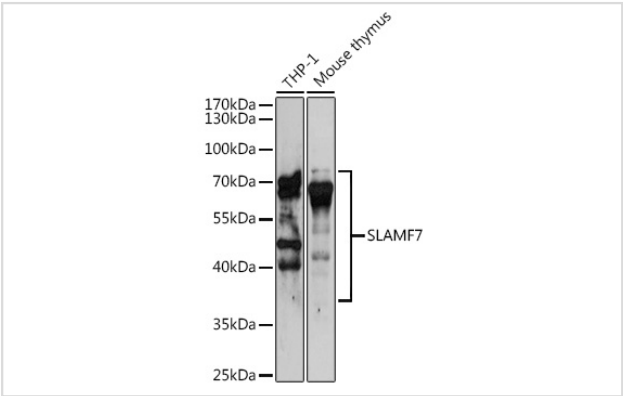
## Description

Product Name	SLAMF7 Antibody
Host Species	Rabbit
Clonality	Polyclonal
Isotype	IgG
Purification	Affinity purification
Applications	WB
Species Reactivity	Human,Mouse,Rat
Specificity	The antibody detects endogenous level of total SLAMF7 protein.
Immunogen Type	Recombinant Protein
Immunogen Description	Recombinant fusion protein of human SLAMF7 (NP_067004.3).
Target Name	SLAMF7
Other Names	SLAMF7;19A;CD319;CRACC;CS1
Accession No.	Uniprot:Q9NQ25GeneID:57823
Uniprot	Q9NQ25
GeneID	57823
SDS-PAGE MW	25-80KDa
Concentration	1.0mg/ml
Formulation	PBS with 0.02% sodium azide,50% glycerol,pH7.3.
Storage	Store at -20°C. Avoid freeze / thaw cycles.

## Application Details

WB 1:500 - 1:2000

## Images



Western blot analysis of extracts of various cell lines, using SLAMF7 antibody.

## Background

---

SLAM family member 7 (SLAMF7), also known as CRACC, CD319, CD2-like receptor-activating cytotoxic cells, and CS1, is a single-pass type I membrane protein and a member of the CD2 family of cell surface receptors. SLAMF7 is expressed on the surface of NK cells, CD8+ T cells, activated B cells, and mature dendritic cells but not in promyelocytic, B-cell lines, or T-cell lines. In human NK cells, activated SLAMF7 transmits signals following association with the adaptor protein EAT-2. In the absence of EAT-2, SLAMF7 potentially inhibited natural killer cell function. It was also inhibitory in T cells, which are typically devoid of EAT-2. Thus, SLAMF7 can exert activating or inhibitory influences on cells of the immune system depending on cellular context and the availability of effector proteins.

---

Note: This product is for in vitro research use only