

PPP2R1A Antibody

Catalog No: #33051



Package Size: #33051-1 50ul #33051-2 100ul

Orders: [order@signalwayantibody.com](mailto:order@signalwayantibody.com)  
Support: [tech@signalwayantibody.com](mailto:tech@signalwayantibody.com)

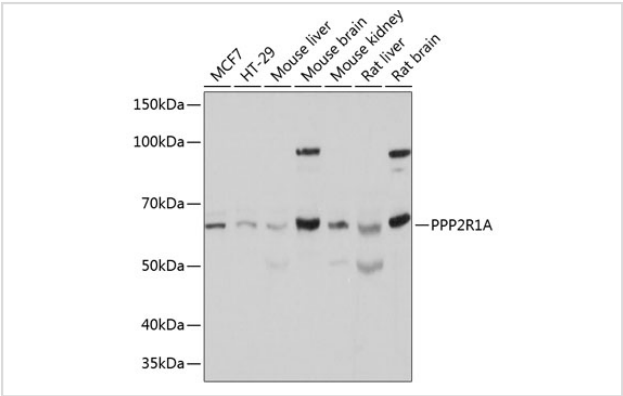
Description

Product Name	PPP2R1A Antibody
Host Species	Rabbit
Clonality	Polyclonal
Purification	Antibodies were purified by affinity purification using immunogen.
Applications	WB,IF
Species Reactivity	Human,Mouse,Rat
Specificity	The antibody detects endogenous level of total PPP2R1A protein.
Immunogen Type	Recombinant Protein
Immunogen Description	Recombinant protein of human PPP2R1A.
Target Name	PPP2R1A
Other Names	PR65A; PP2AAALPHA; PP2A-Aalpha;
Accession No.	Swiss-Prot:P30153NCBI Gene ID:5518
Uniprot	P30153
GeneID	5518;
SDS-PAGE MW	65KD
Concentration	1.0mg/ml
Formulation	Supplied at 1.0mg/mL in phosphate buffered saline (without Mg2+ and Ca2+), pH 7.4, 150mM NaCl, 0.02% sodium azide and 50% glycerol.
Storage	Store at -20°C

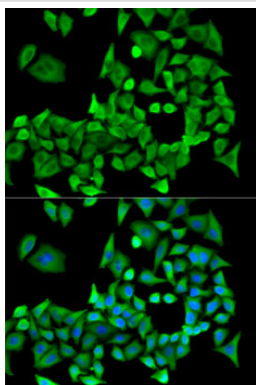
Application Details

WB 1:500 - 1:2000IF 1:10 - 1:100

Images



Western blot analysis of extracts of various cell lines, using PPP2R1A Polyclonal at 1:500 dilution.



Immunofluorescence analysis of U2OS cells using PPP2R1A .  
Blue: DAPI for nuclear staining.

## Background

This gene encodes a constant regulatory subunit of protein phosphatase 2. Protein phosphatase 2 is one of the four major Ser/Thr phosphatases, and it is implicated in the negative control of cell growth and division. It consists of a common heteromeric core enzyme, which is composed of a catalytic subunit and a constant regulatory subunit, that associates with a variety of regulatory subunits. The constant regulatory subunit A serves as a scaffolding molecule to coordinate the assembly of the catalytic subunit and a variable regulatory B subunit. This gene encodes an alpha isoform of the constant regulatory subunit A. Alternatively spliced transcript variants have been described.

Note: This product is for in vitro research use only