

SATB1 Antibody

Catalog No: #33052

Package Size: #33052-1 50ul #33052-2 100ul

Orders: order@signalwayantibody.comSupport: tech@signalwayantibody.com

Description

Product Name	SATB1 Antibody
Host Species	Rabbit
Clonality	Polyclonal
Purification	Antibodies were purified by affinity purification using immunogen.
Applications	WB IHC IF
Species Reactivity	Hu Ms Rt
Specificity	The antibody detects endogenous level of total SATB1 protein.
Immunogen Type	Recombinant Protein
Immunogen Description	Recombinant protein of human SATB1.
Target Name	SATB1
Accession No.	Swiss-Prot:Q01826NCBI Gene ID:6304
Uniprot	Q01826
GeneID	6304;
SDS-PAGE MW	85KD
Concentration	1.0mg/ml
Formulation	Supplied at 1.0mg/mL in phosphate buffered saline (without Mg ²⁺ and Ca ²⁺), pH 7.4, 150mM NaCl, 0.02% sodium azide and 50% glycerol.
Storage	Store at -20°C

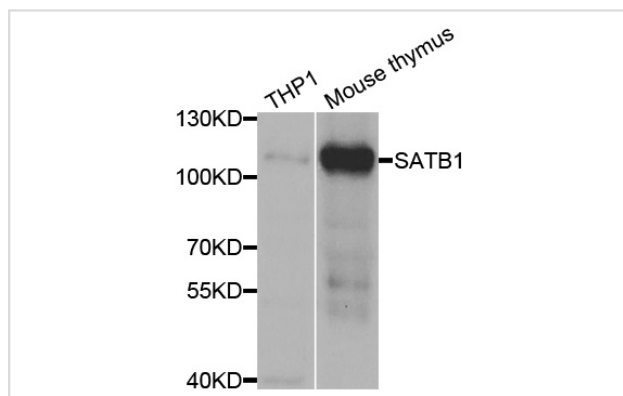
Application Details

Western blotting: 1:500 - 1:2000

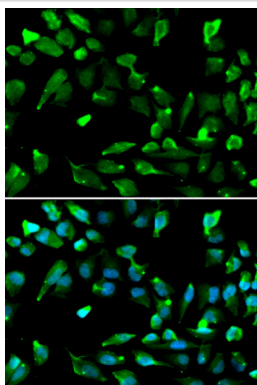
Immunohistochemistry: 1:50 - 1:200

Immunofluorescence: 1:50 - 1:200

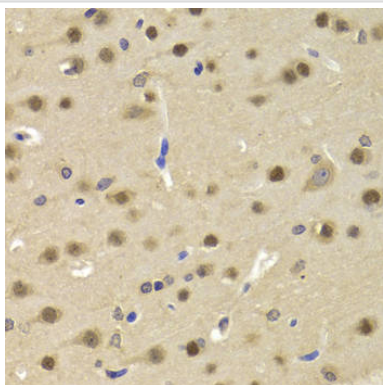
Images



Western blot analysis of extracts of various cell lines, using SATB1 antibody.



Immunofluorescence analysis of A549 cell using SATB1 antibody. Blue: DAPI for nuclear staining.



Immunohistochemistry of paraffin-embedded Rat brain using SATB1 antibody at dilution of 1:100 (x400 lens).

Background

This gene encodes a matrix protein which binds nuclear matrix and scaffold-associating DNAs through a unique nuclear architecture. The protein recruits chromatin-remodeling factors in order to regulate chromatin structure and gene expression. Multiple transcript variants encoding different isoforms have been found for this gene.

Note: This product is for in vitro research use only