

Coiled-coil domain-containing protein 106 Antibody

Catalog No: #21412

Package Size: #21412-1 50ul #21412-2 100ul

Orders: order@signalwayantibody.com

Support: tech@signalwayantibody.com

Description

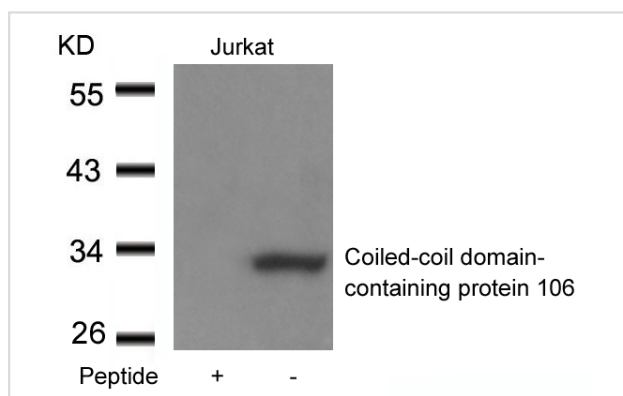
| | |
|-----------------------|---|
| Product Name | Coiled-coil domain-containing protein 106 Antibody |
| Host Species | Rabbit |
| Clonality | Polyclonal |
| Purification | Antibodies were produced by immunizing rabbits with synthetic peptide and KLH conjugates. Antibodies were purified by affinity-chromatography using epitope-specific peptide. |
| Applications | WB |
| Species Reactivity | Hu |
| Specificity | The antibody detects endogenous level of total Coiled-coil domain-containing protein. 106. |
| Immunogen Type | Peptide-KLH |
| Immunogen Description | Peptide sequence around aa.2~6 (N-D-R-S-S) derived from Human Coiled-coil domain-containing protein 106. |
| Target Name | Coiled-coil domain-containing protein 106 |
| Other Names | CCDC106; ZNF581; HSU79303 |
| Accession No. | Swiss-Prot: Q9BWC9NCBI Protein: NP_037433.2 |
| Uniprot | Q9BWC9 |
| GeneID | 29903; |
| Concentration | 1.0mg/ml |
| Formulation | Supplied at 1.0mg/mL in phosphate buffered saline (without Mg ²⁺ and Ca ²⁺), pH 7.4, 150mM NaCl, 0.02% sodium azide and 50% glycerol. |
| Storage | Store at -20°C for long term preservation (recommended). Store at 4°C for short term use. |

Application Details

Predicted MW: 32kd

Western blotting: 1:500~1:1000

Images



Background

CCDC106 promotes the degradation of p53 protein and inhibits its transactivity.

Note: This product is for in vitro research use only